

Quick Nav

Supported Devices	3
Supported Operating Systems.	3
Installation.	3
Launching Kensington Konnect	3
Getting Started (Software Walkthrough).	4
Getting Started (Device Walkthrough).	8
Easy mode/Advance mode	12
Top view/Side view	14
Buttons/Pointer/Scrolling.	15
Buttons	16
AI Konnection	17
Mouse	18
Mouse Custom Speed.	20
Productivity	21
Editing.	21
Launching	21
Web Browser	24
Desktop	24
Windows Snapping.	24
Macros.	24
Snippet	29
General	30
Delete/Reset a button	31
Pointer.	32
Pointer: Speed	32
Pointer: Movement.	33
Scrolling	34
Profiles.	35

(cont.)

Applications	38
Example 1:	39
Device settings	40
Global Setting	41
Software Update	43
Choose Language.	43
Color Theme	43
Backup your Settings	44
Restore your Settings	44
Notifications	44
Support	44
Feedback.	45
Need More Help?.	45

Supported Devices

- All Kensington Trackballs
- Selected Kensington Mice

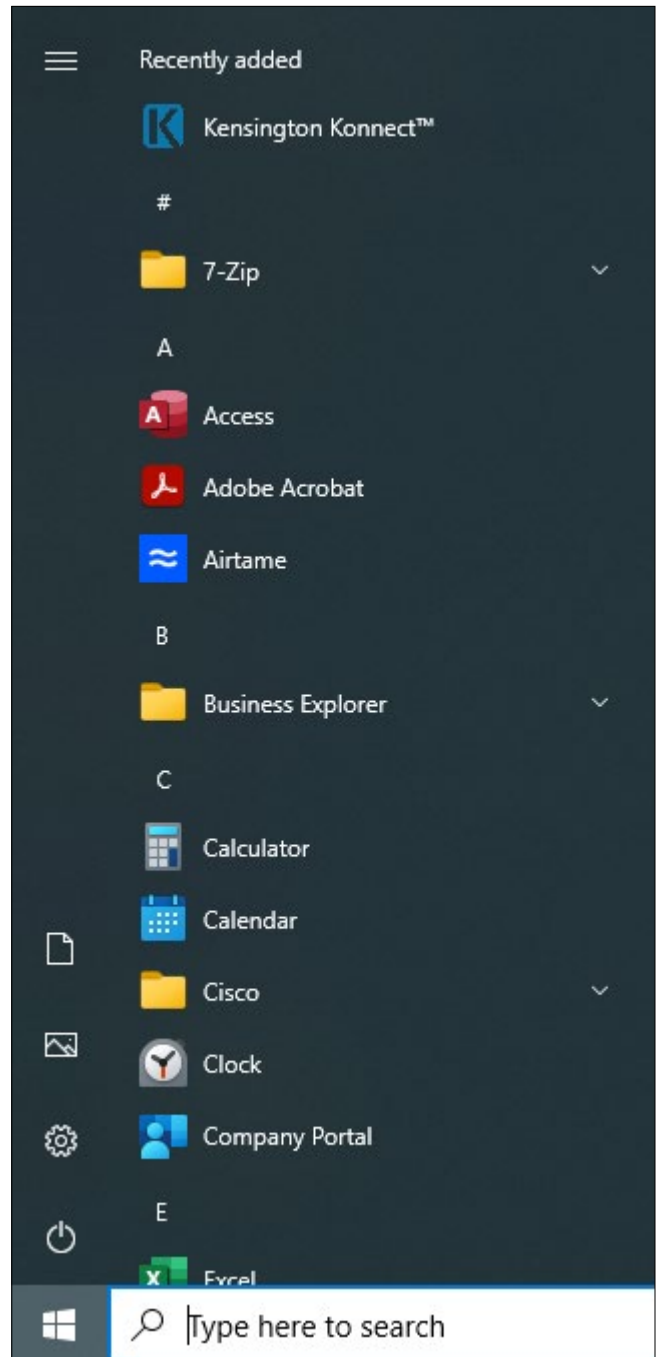
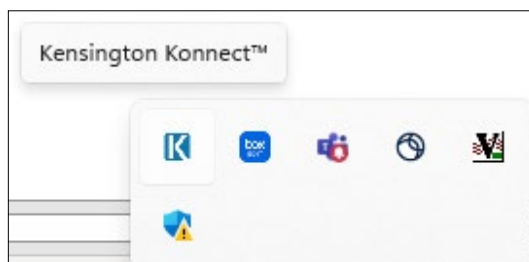
Supported Operating Systems

- Windows 10 or later
- macOS 12 or later

Installation

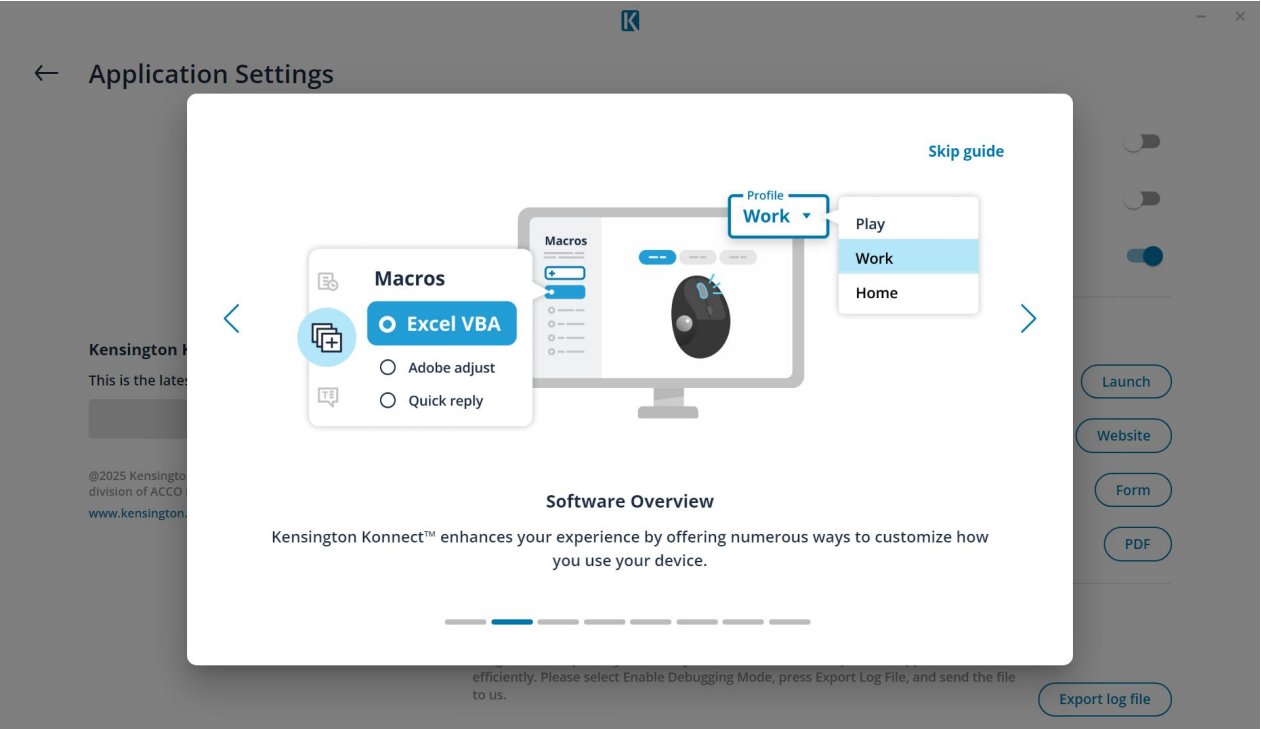
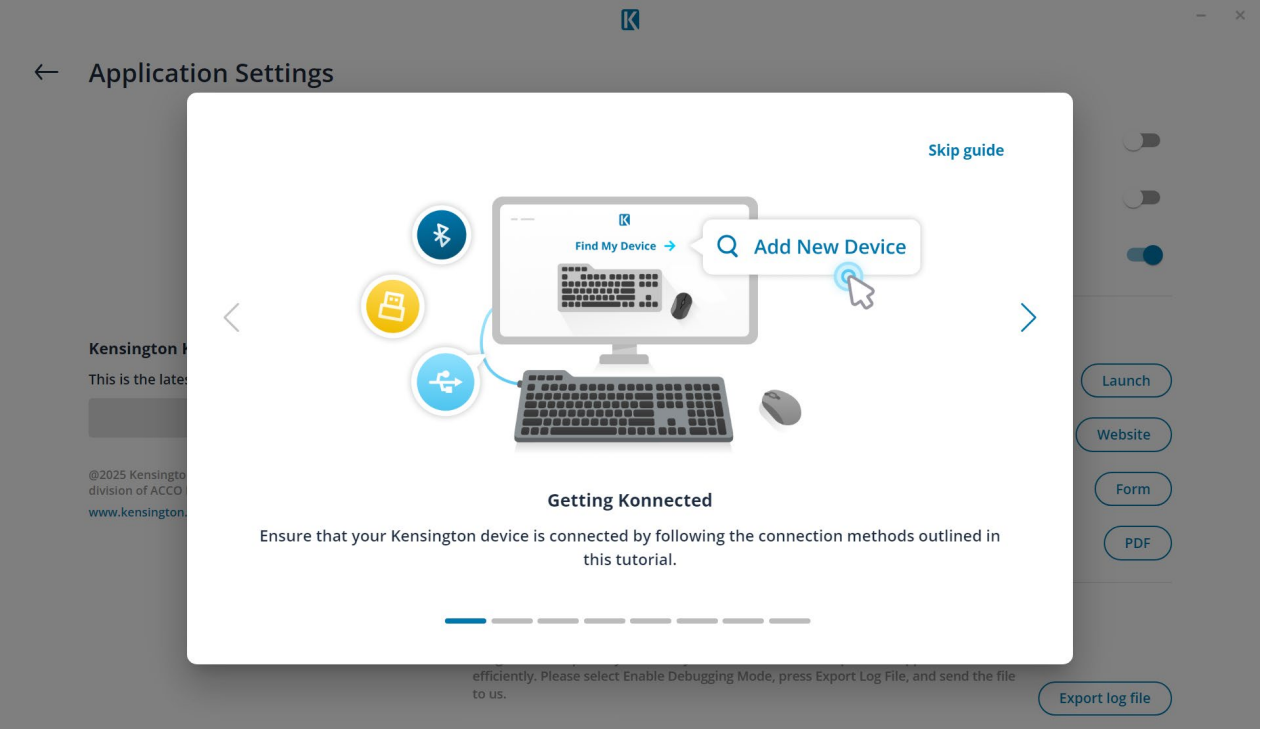
1. Open your web browser and go to kensington.com/software/kensington-konnect.
2. Click the Download button.
3. From your Downloads folder, find the installation file. Double-click to install Kensington Konnect™.
4. A window may open asking if you want to run the installation. Accept to continue.
Note: If you do not have Admin rights on your computer, you will need to contact your local Administrator to proceed with the installation.
5. Follow the prompts to complete the installation on Windows or macOS.
6. Follow the prompts to complete installation.

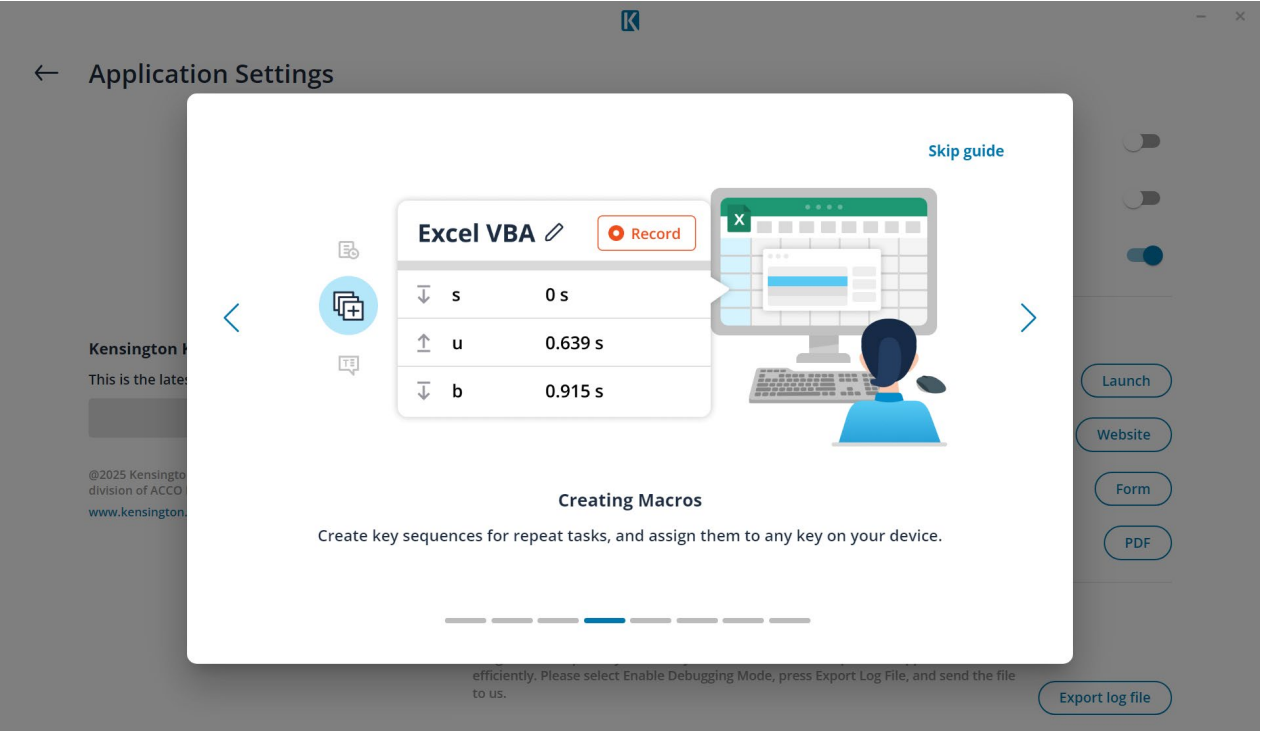
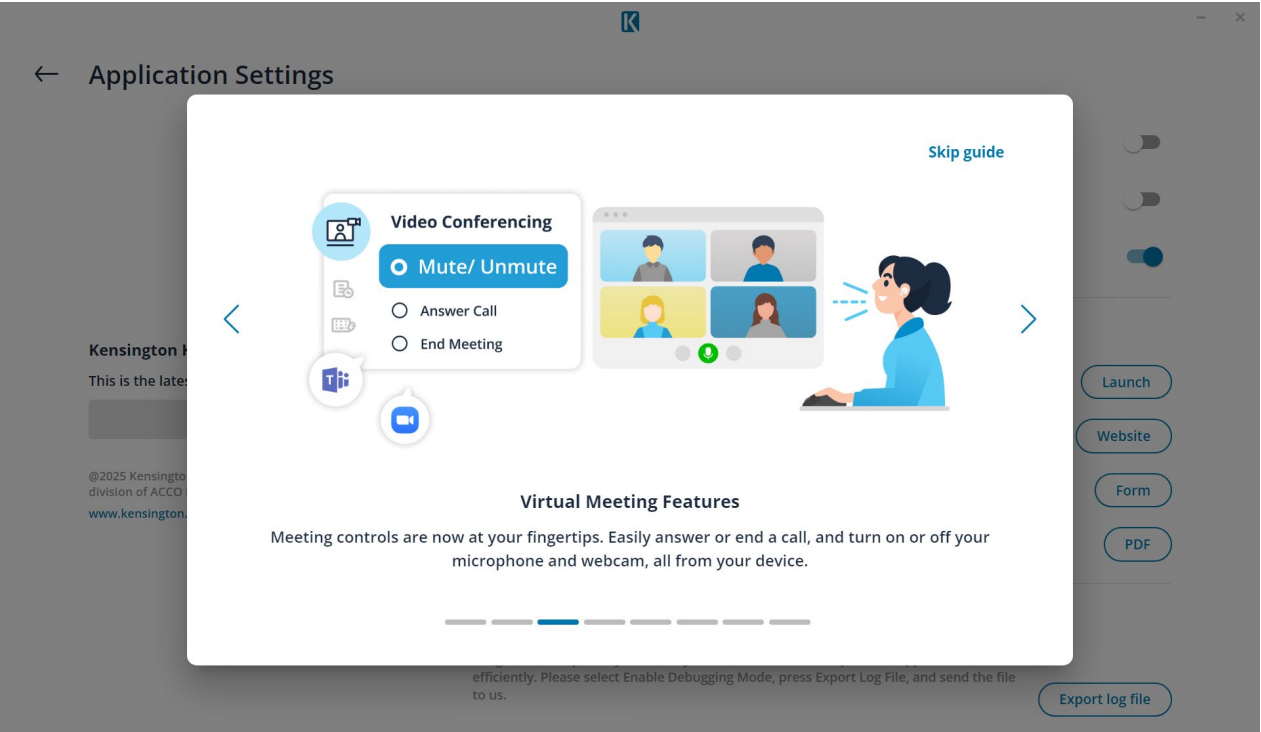
Launching Kensington Konnect

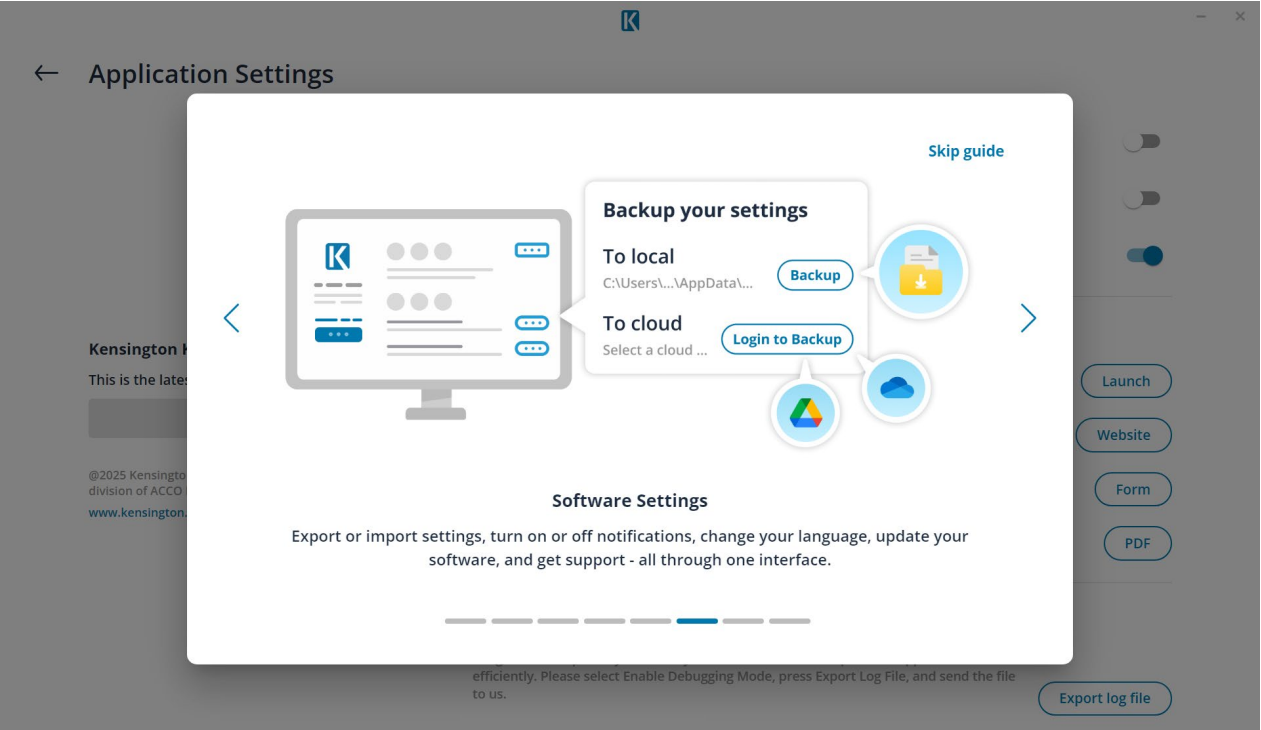
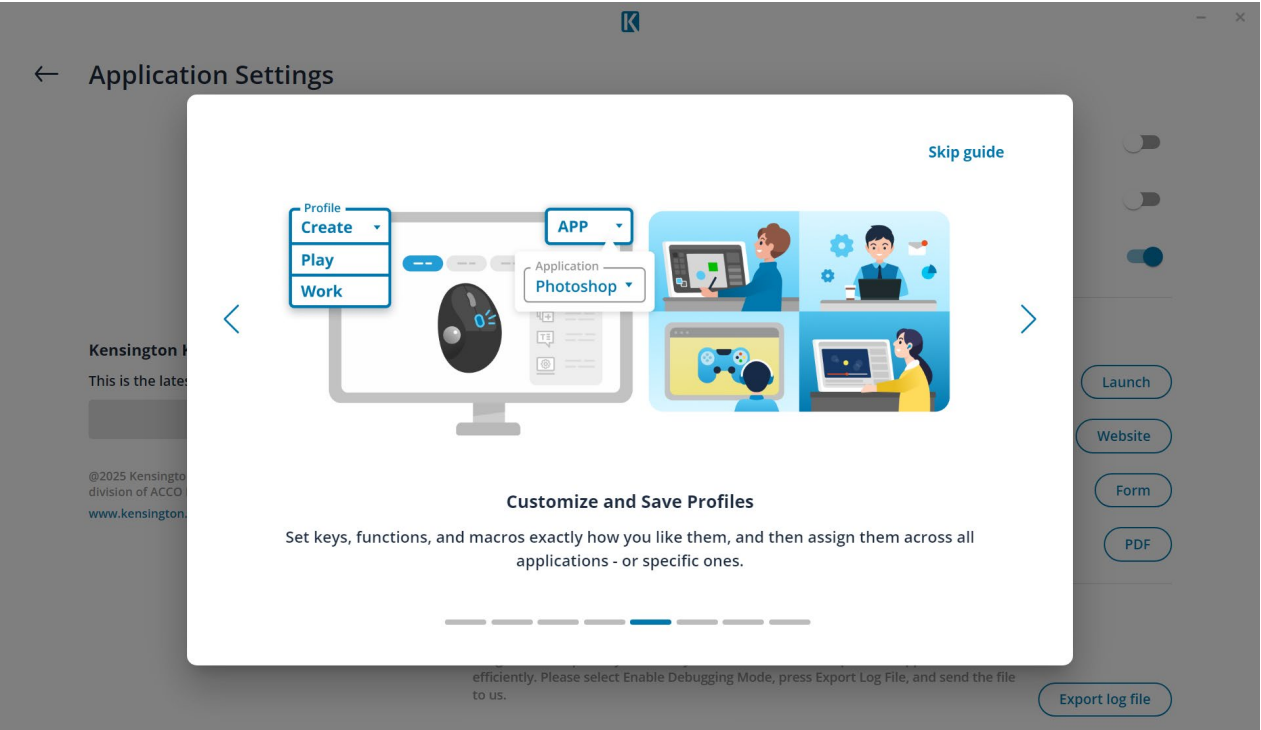


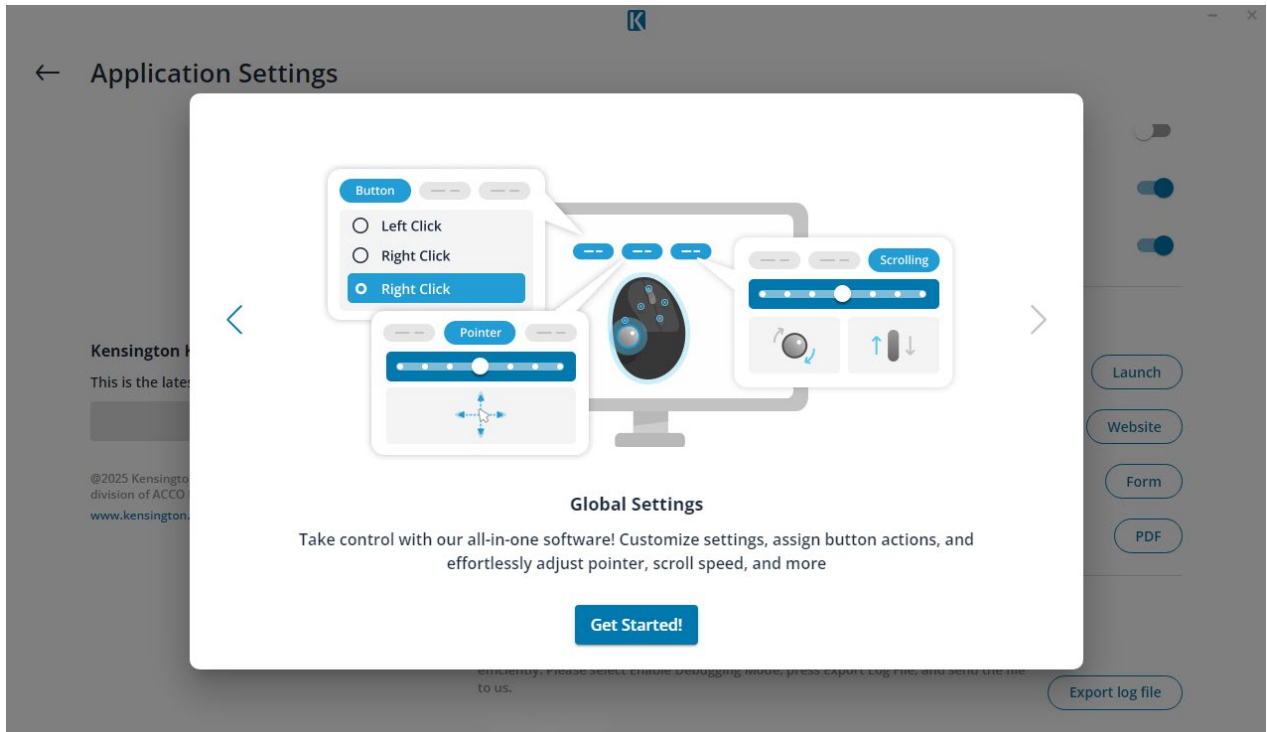
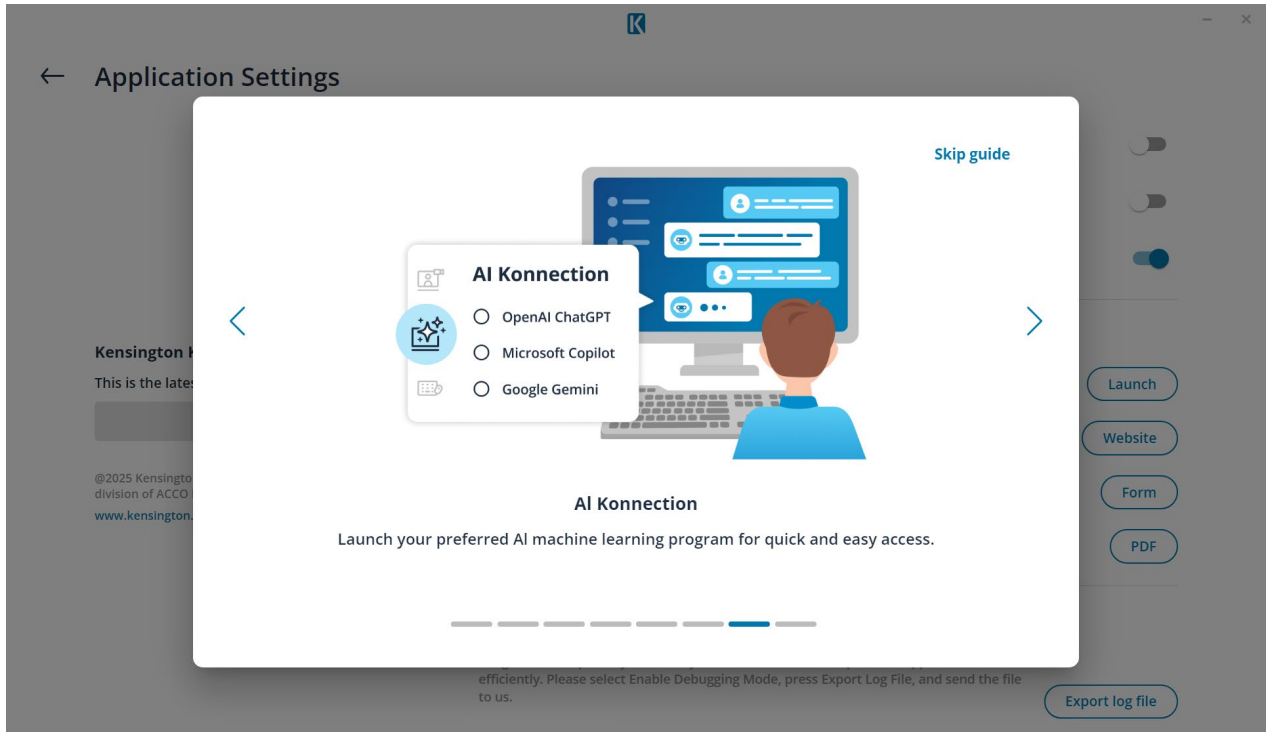
Getting Started (Software Walkthrough)

When you launch Kensington Connect for the first time, a tutorial walkthrough will guide you through the software and highlight its key features.



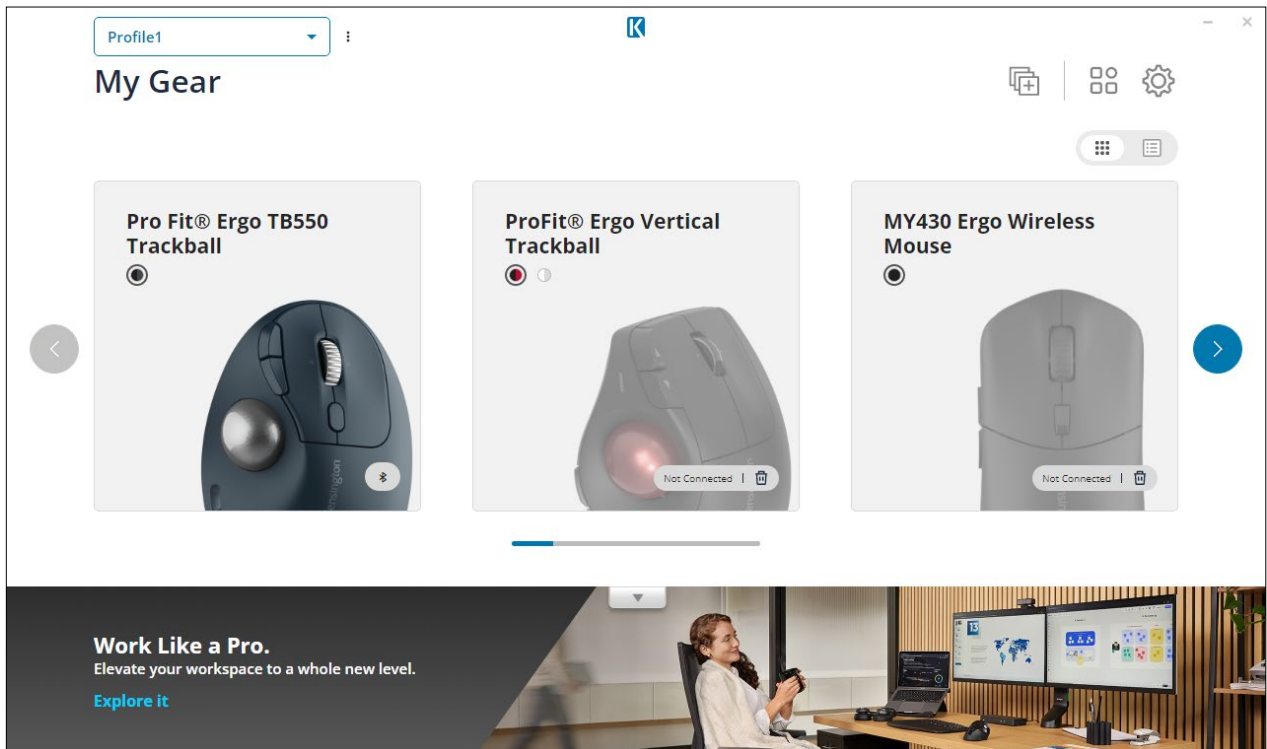




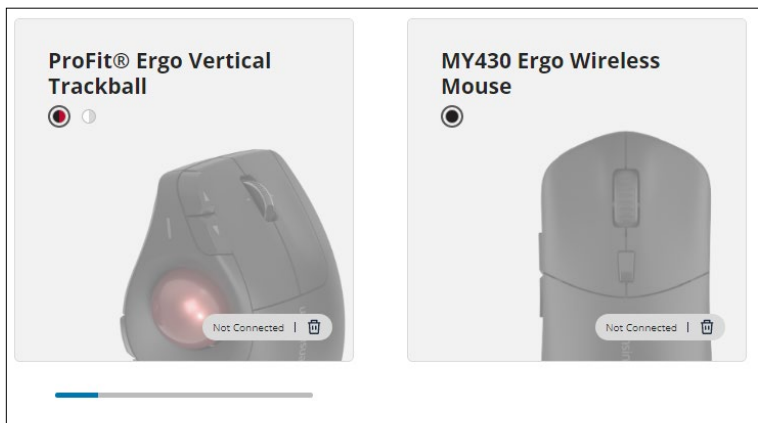


Getting Started (Device Walkthrough)

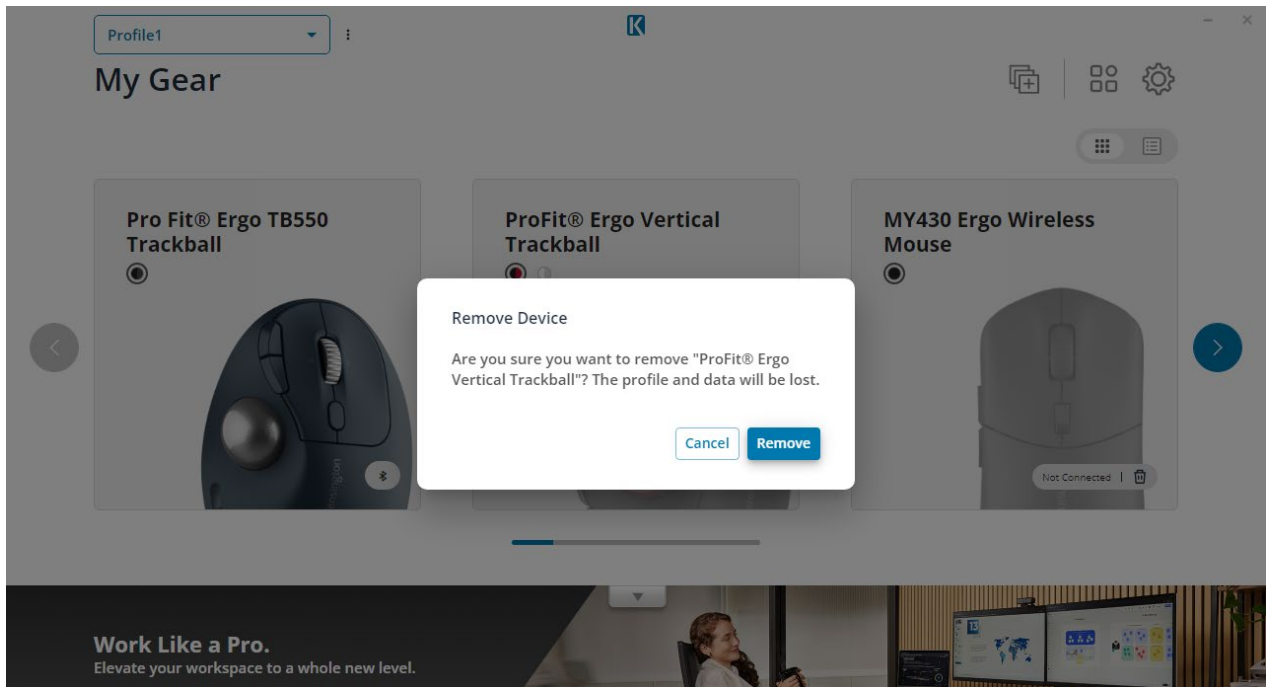
- Devices connected to this host will be shown on the home page, and provide the below information.
 - ◇ Device image
 - ◇ Product name
 - ◇ Connection method (Wired/2.4GHz dongle/Bluetooth/Not connected)
 - ◇ Battery indication (on selected models)
 - ◇ Serial Number (on selected models): you can also customize your device name here
 - ◇ Color: for devices with multiple color options, users can manually select their color



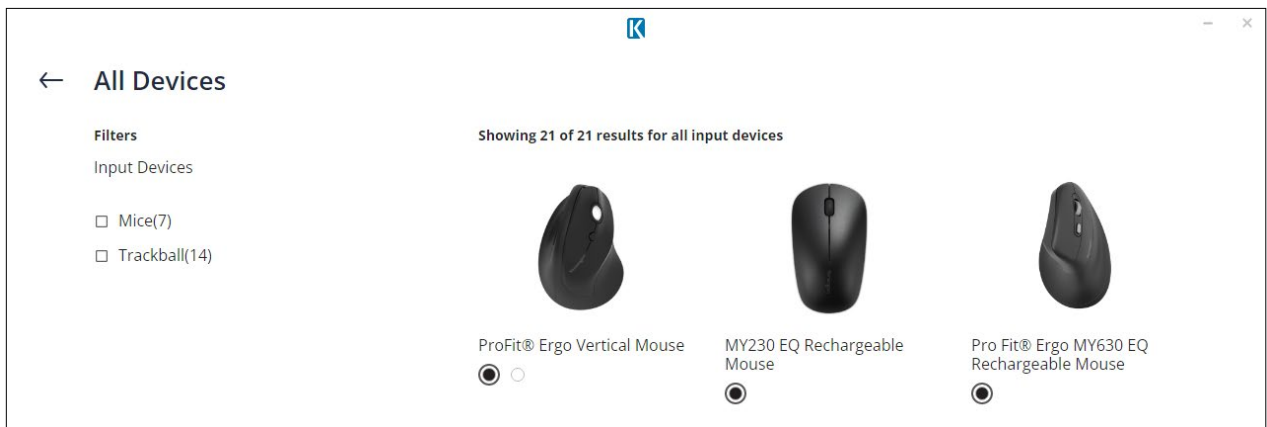
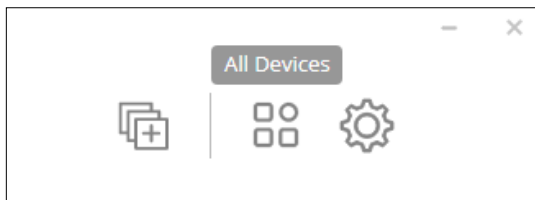
- If a device is currently offline, the product image will be grayed out.

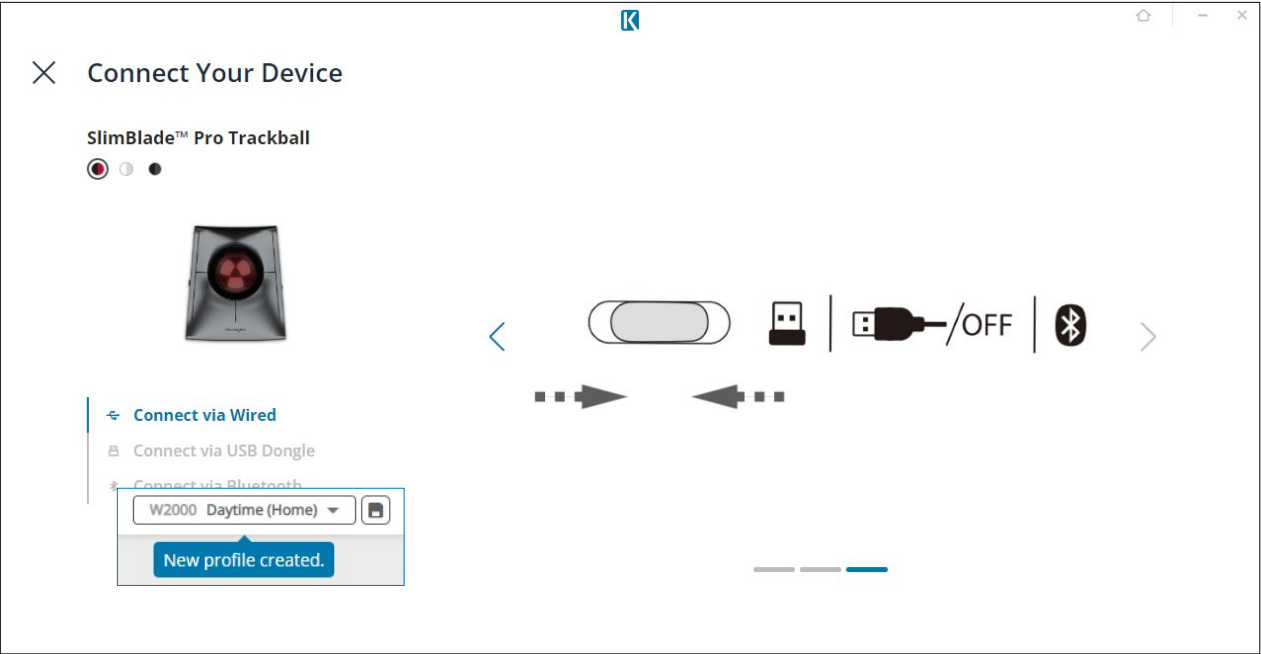


- To manually remove a device, click the trash icon and select **Remove**

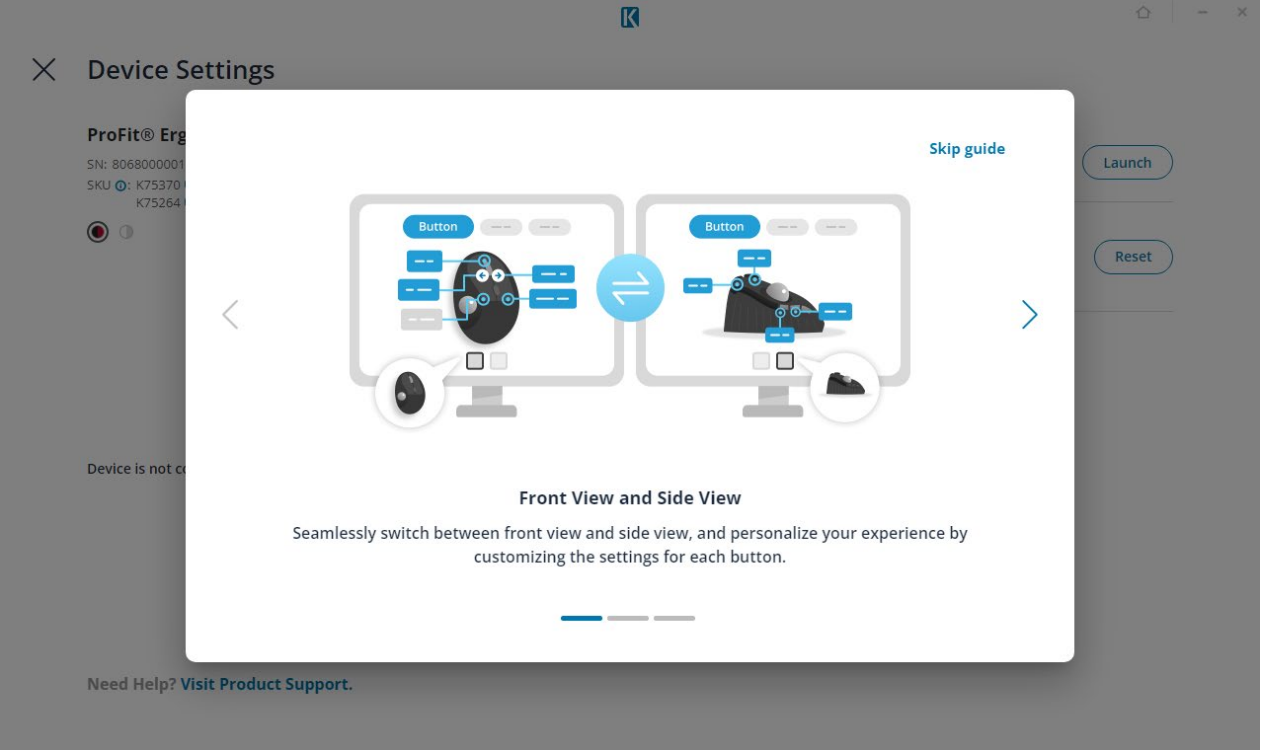


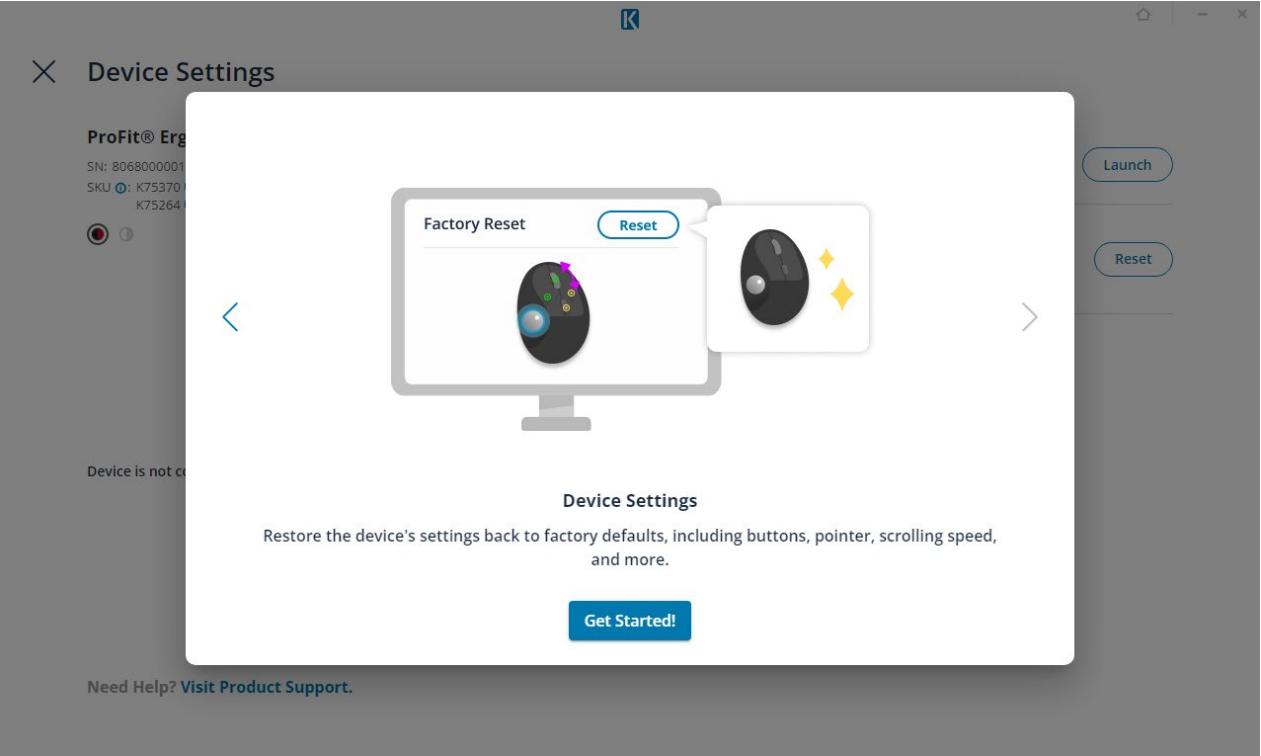
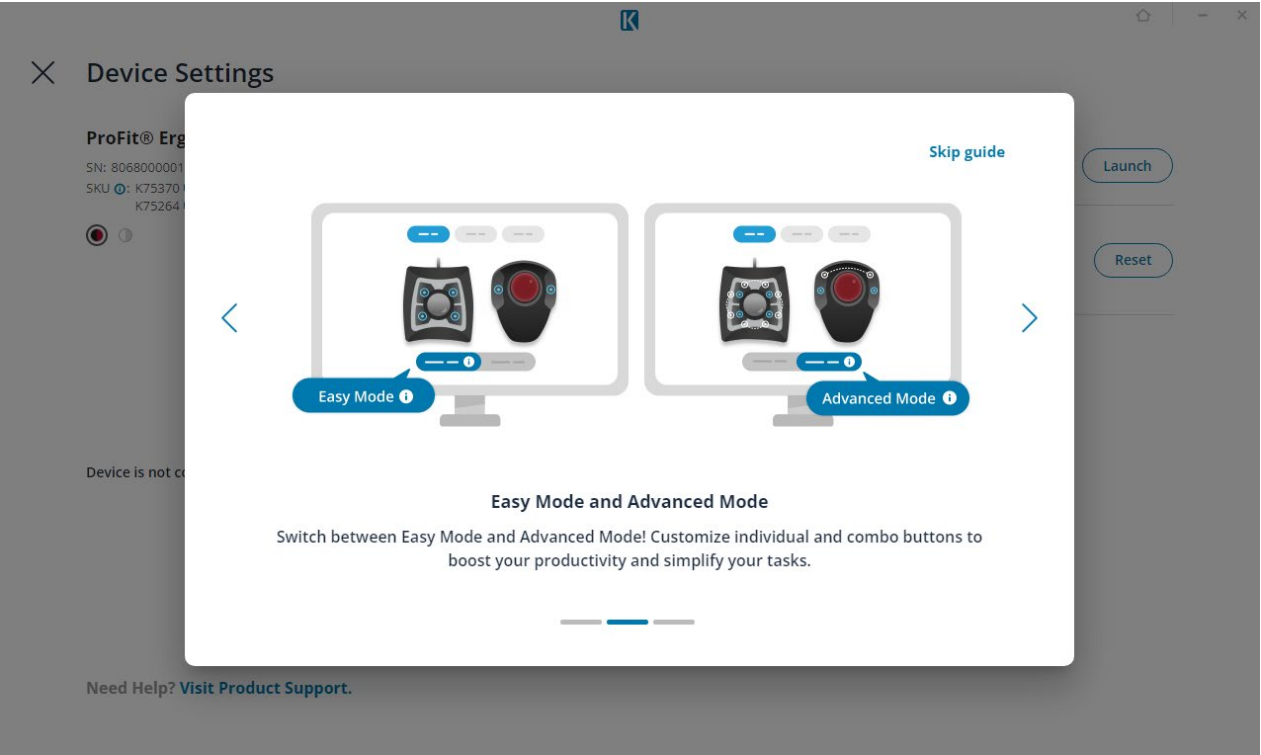
- If your computer did not recognize the device, click **All Devices**
 - ◇ Here, you will find all Kensington® Konnect™ products and can select your desired device.
 - ◇ Follow the tutorial to connect your device.





- Click on the device you want to configure on the Home Page to access its settings page. A device tutorial will launch automatically for first-time use.



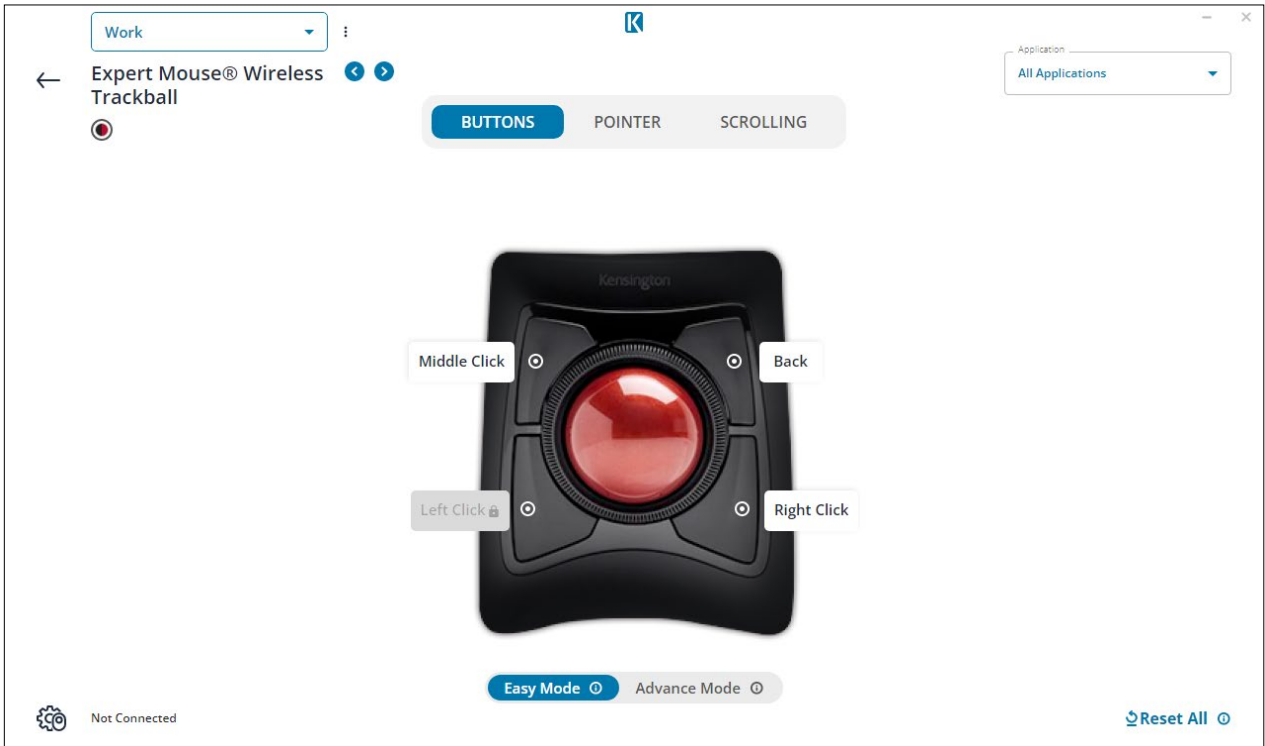


Easy mode/Advance mode

When users select an ambidextrous trackball with combo-key functionality, they can toggle between Easy Mode and Advanced Mode options. In Easy Mode, users can enable and configure each individual button. In Advanced Mode, both individual buttons and Combo Keys can be enabled and customized for enhanced functionality.

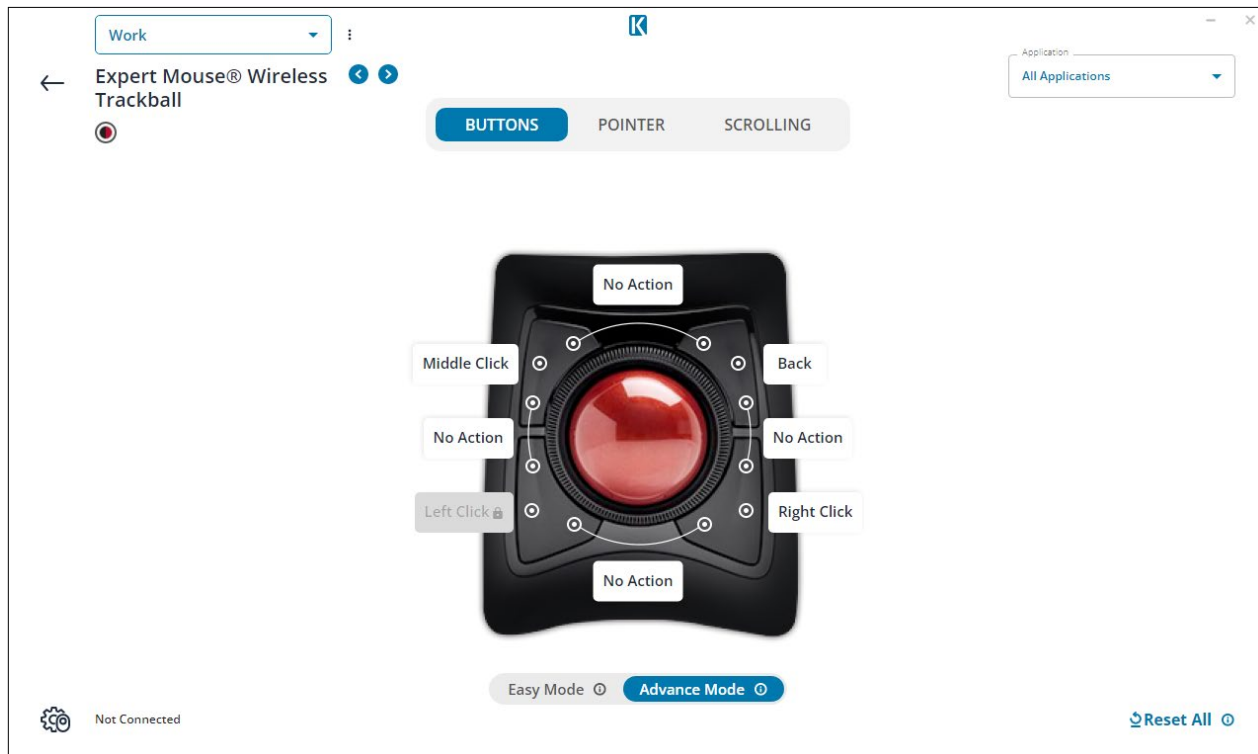
Easy mode

- In Easy Mode, users can enable and configure each individual button.



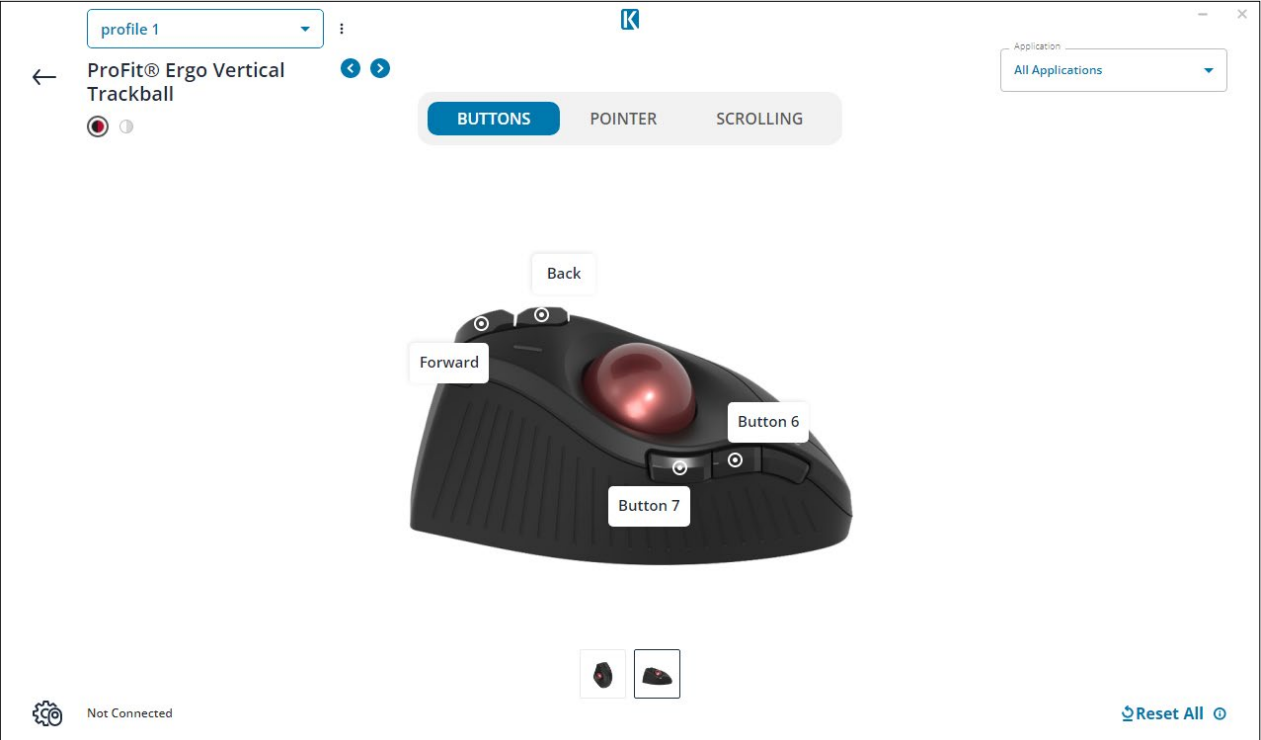
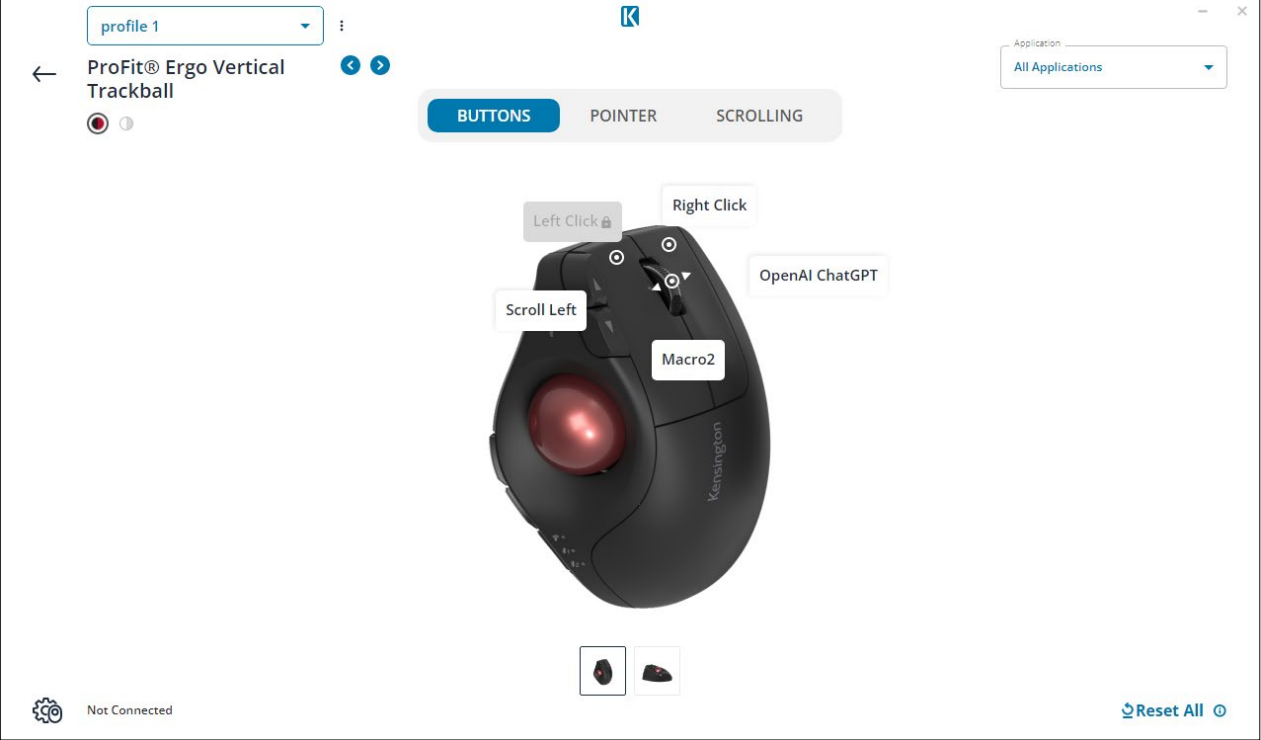
Advance mode

- In Advanced Mode, both individual buttons and Combo Keys can be enabled and customized for enhanced functionality.



Top view/Side view

For selected models with multiple buttons, users can switch between “Top View” and “Side View” modes to enable and customize various buttons.



Buttons/Pointer/Scrolling

On product page user can do different customization settings with these three tabs.

Buttons

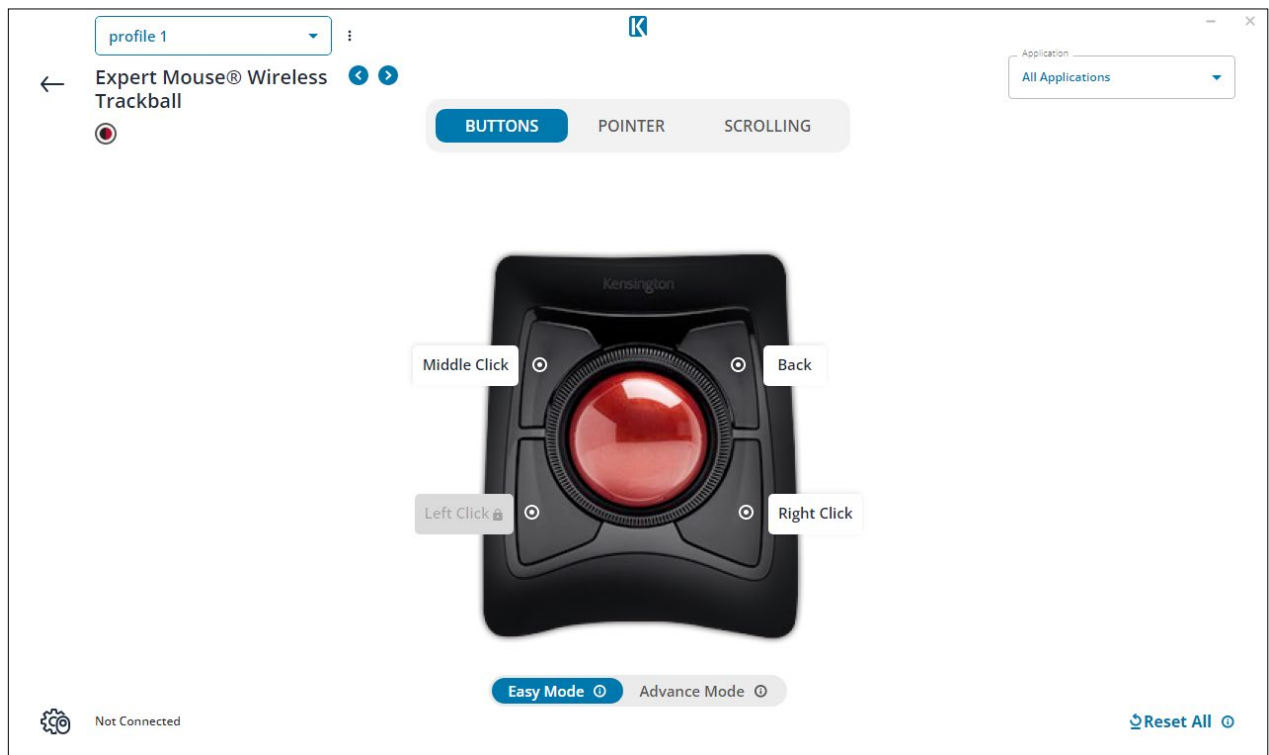
- Assign a function or keyboard Short to an individual button or a set of combo buttons.

Pointer

- By adjusting the Pointer settings, users can configure the default cursor movement speed, enable acceleration, apply a custom speed or restrict cursor movement to a single plane, either horizontally or vertically.

Scrolling

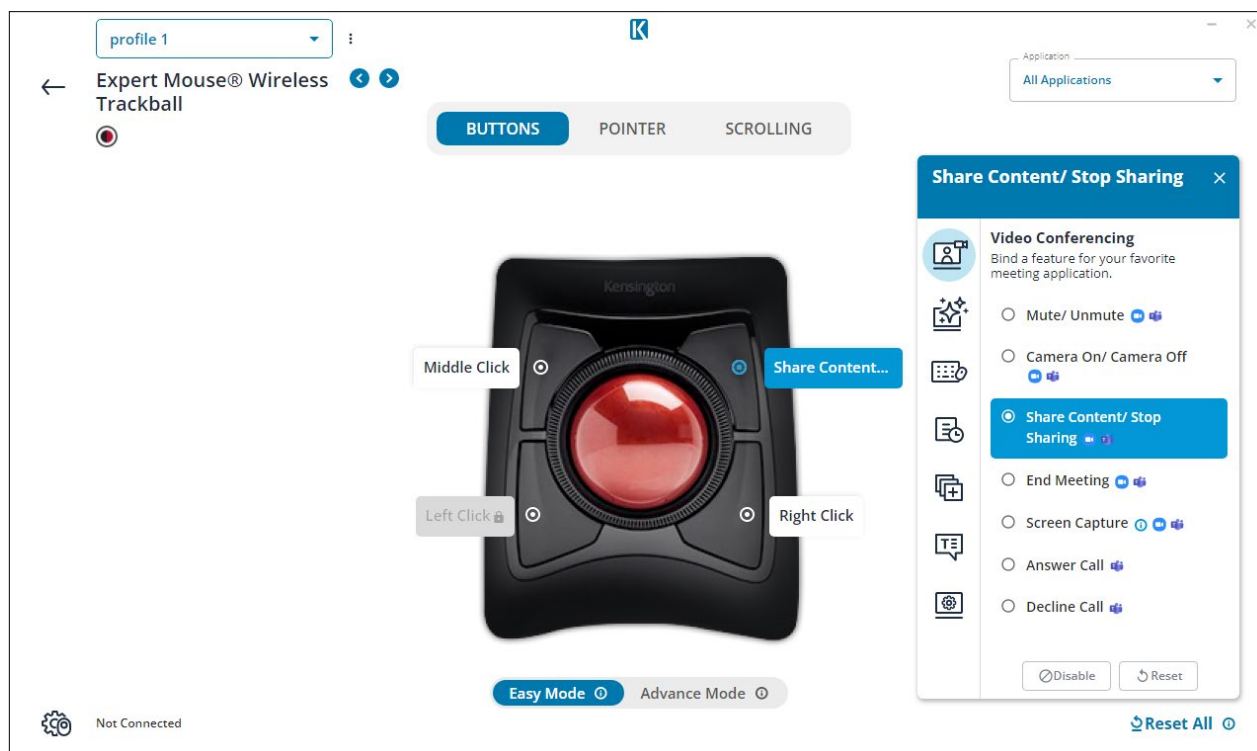
- Adjust scrolling speed and/or alter scrolling orientation.



Buttons

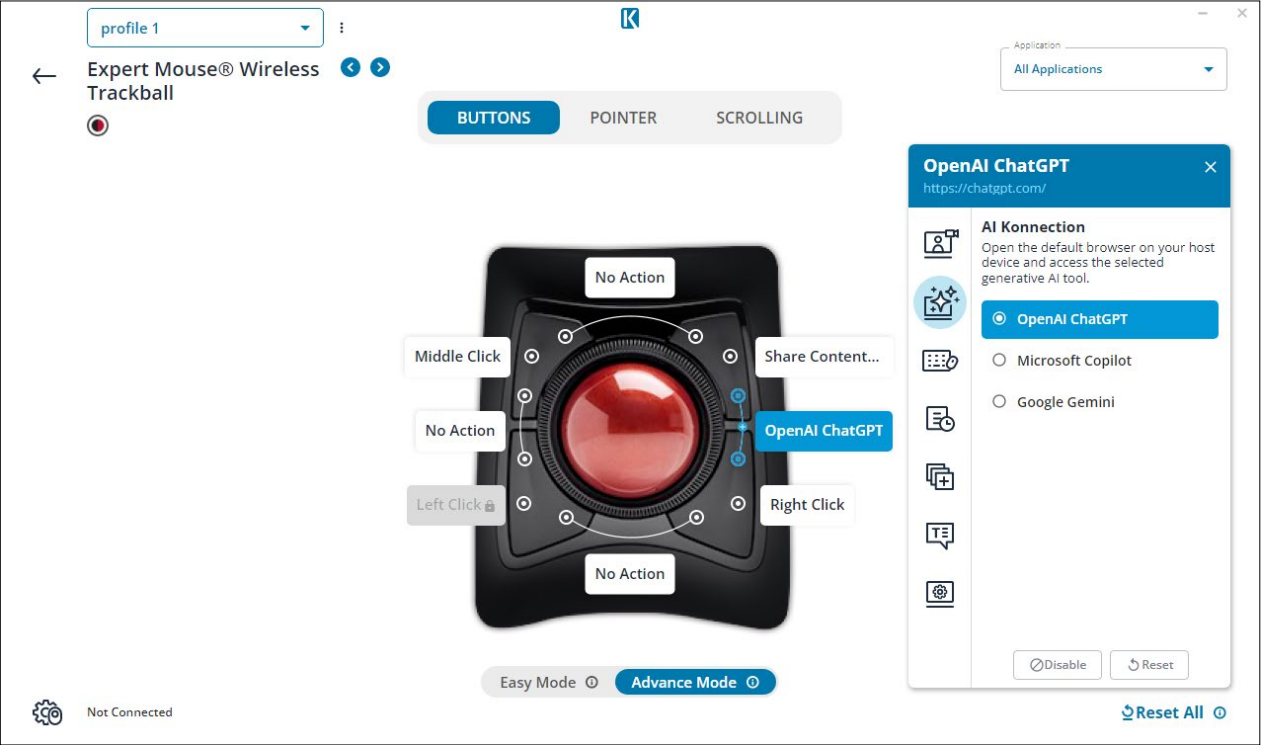
Support Microsoft Teams and Zoom

- Select a key or a set of combo-keys on your device
- Choose a function from the menu



AI Konnection

Open the default browser on your host device and access the selected generative AI tool (ChatGPT/Copilot/Gemini).

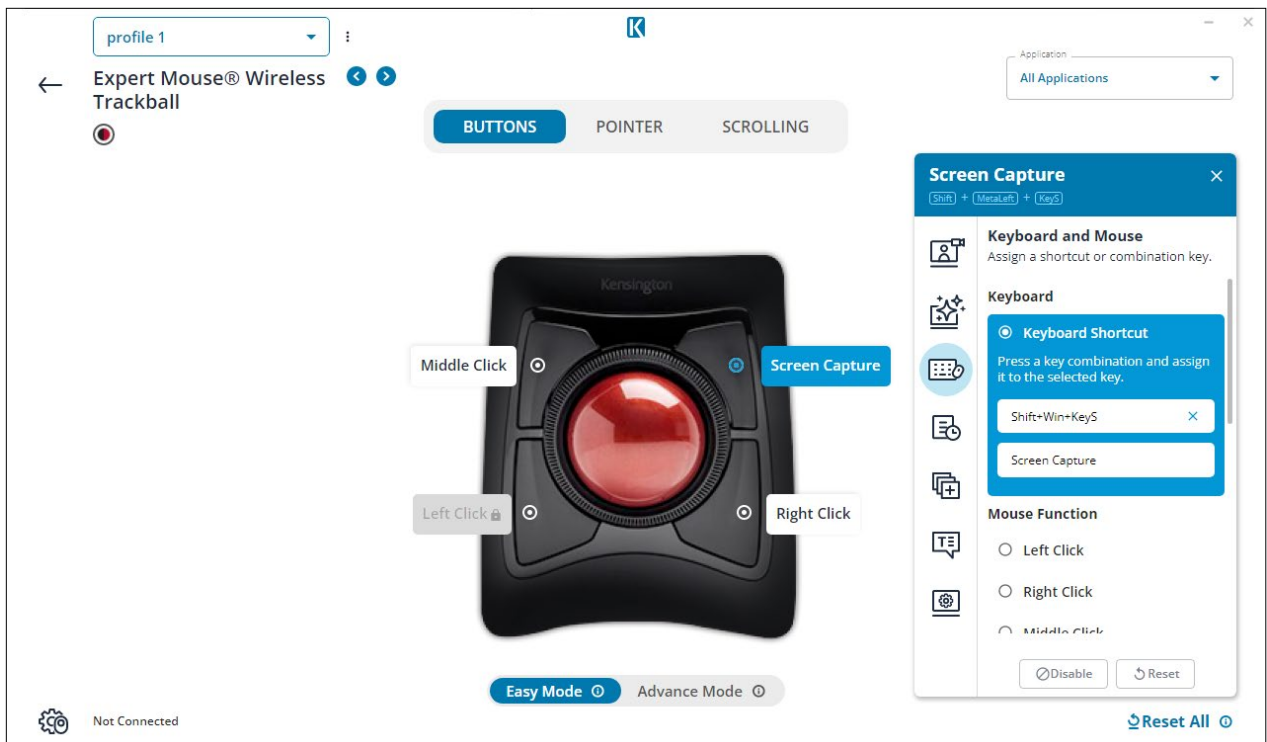


Mouse

- Select a button from your device
- Choose a function you'd like to assign to the button from the menu

Custom Shortcut

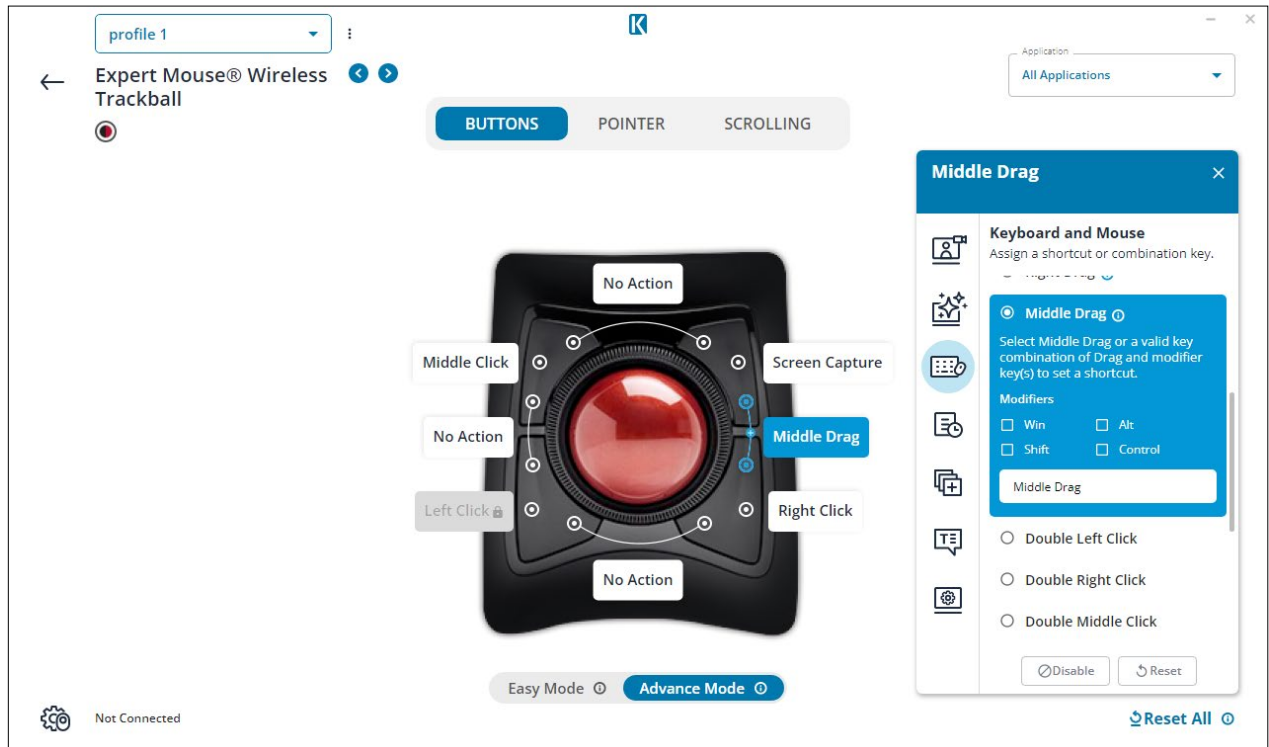
- Press a combination of keystrokes
- Enter a desired label name for the shortcut



Mouse Function

All mouse functions can also be combined with modifiers

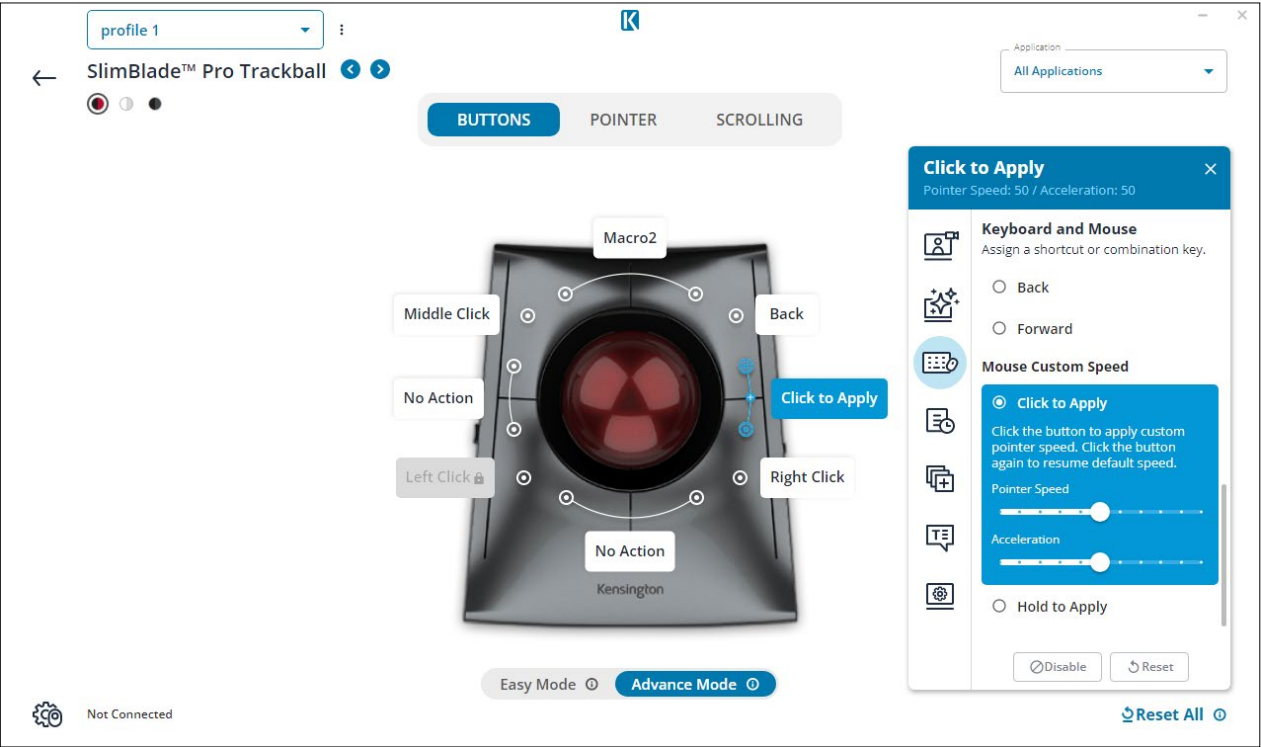
- Select a button from your device.
- Choose a function you'd like to assign to the button from the menu.
- Enter a desired label name for the shortcut



- **Left Click**
Left Click on the mouse
Can be combined with: Win/Alt/Shift/Control
- **Right Click**
Right Click on the mouse
Can be combined with: Win/Alt/Shift/Control
- **Middle Click**
Middle Click on the mouse
Can be combined with: Win/Alt/Shift/Control
- **Back**
Back Function on the mouse
Can be combined with: Win/Alt/Shift/Control
- **Forward**
Forward function on the mouse
Can be combined with: Win/Alt/Shift/Control
- **Double Left Click**
Double Left Click on the mouse
Can be combined with: Win/Alt/Shift/Control
- **Double Right Click**
Double Right Click on the mouse
Can be combined with: Win/Alt/Shift/Control
- **Double Middle Click**
Double Middle on the mouse
Can be combined with: Win/Alt/Shift/Control
- **Triple Left Click**
Triple Left Click on the mouse
Can be combined with: Win/Alt/Shift/Control

Mouse Custom Speed

Allows users to customize the cursor speed of their mice or trackballs and apply the setting by clicking or holding a button.



Productivity

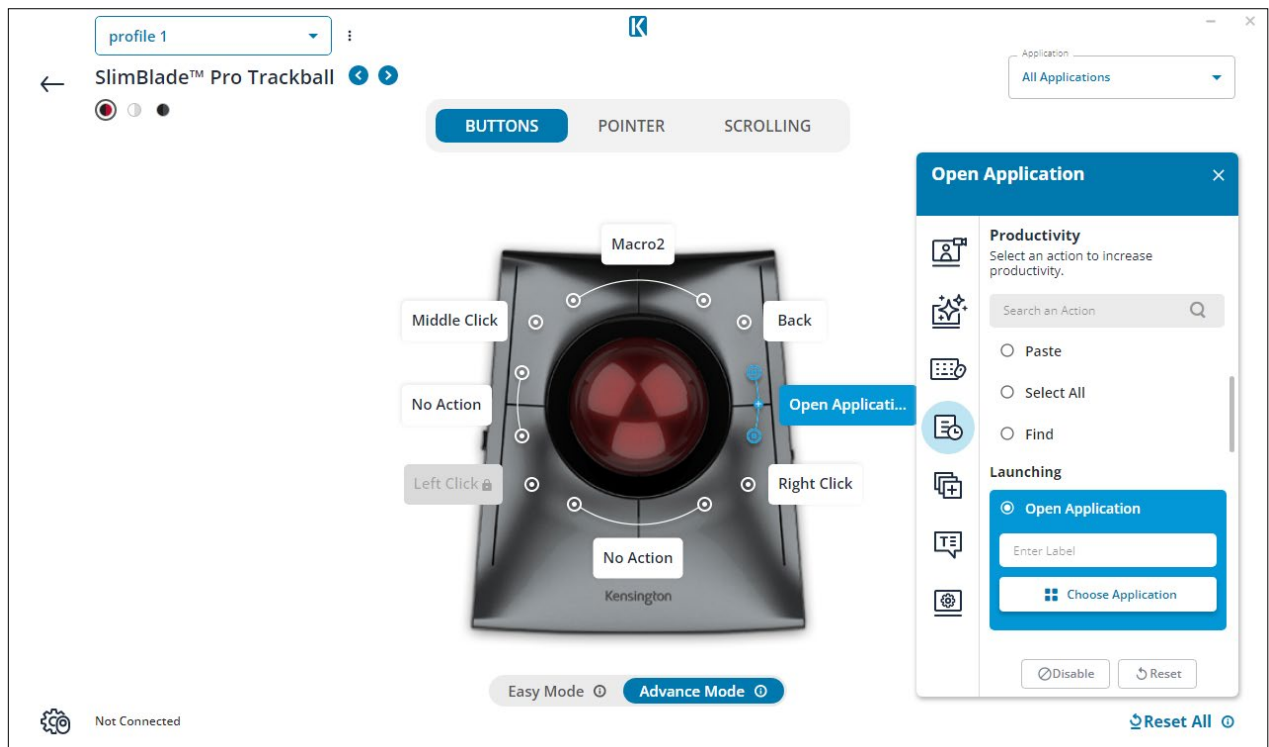
- Select a button from your device.
- Choose a function you'd like to assign to the button from the menu.

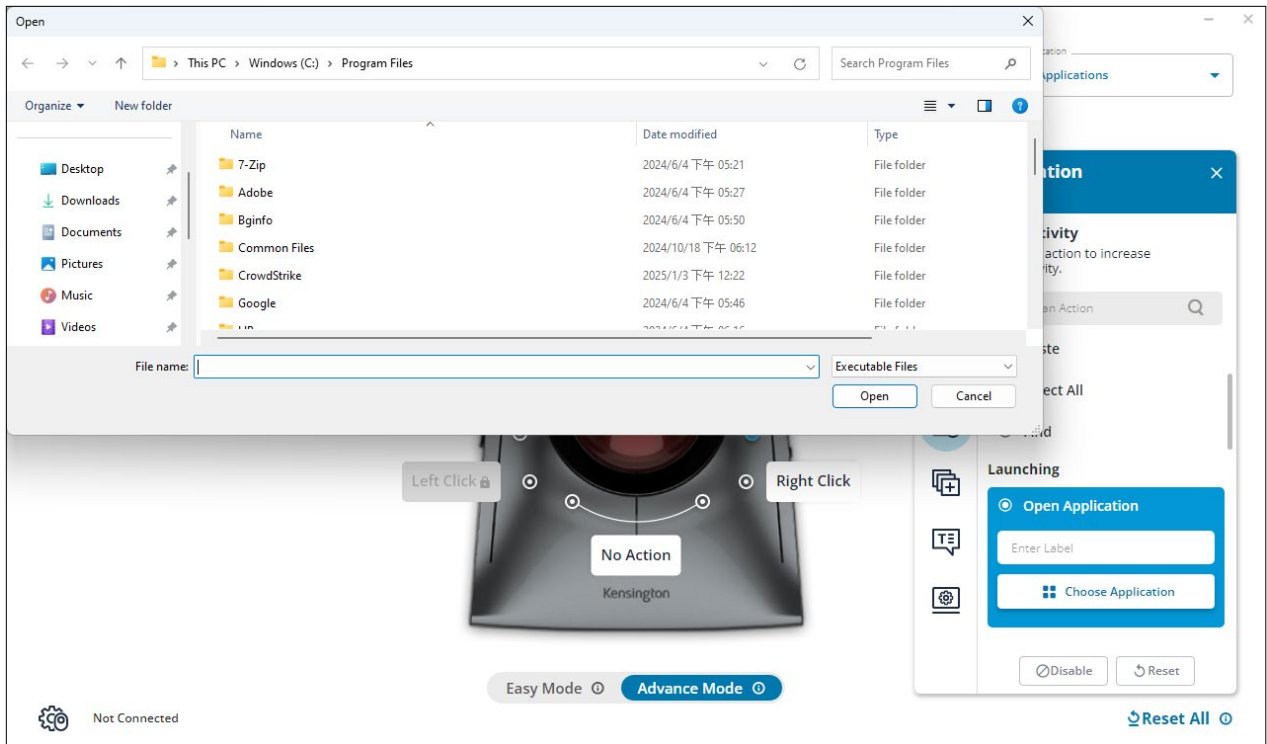
Editing

- Undo
- Redo
- Cut
- Copy
- Paste
- Select All
- Find

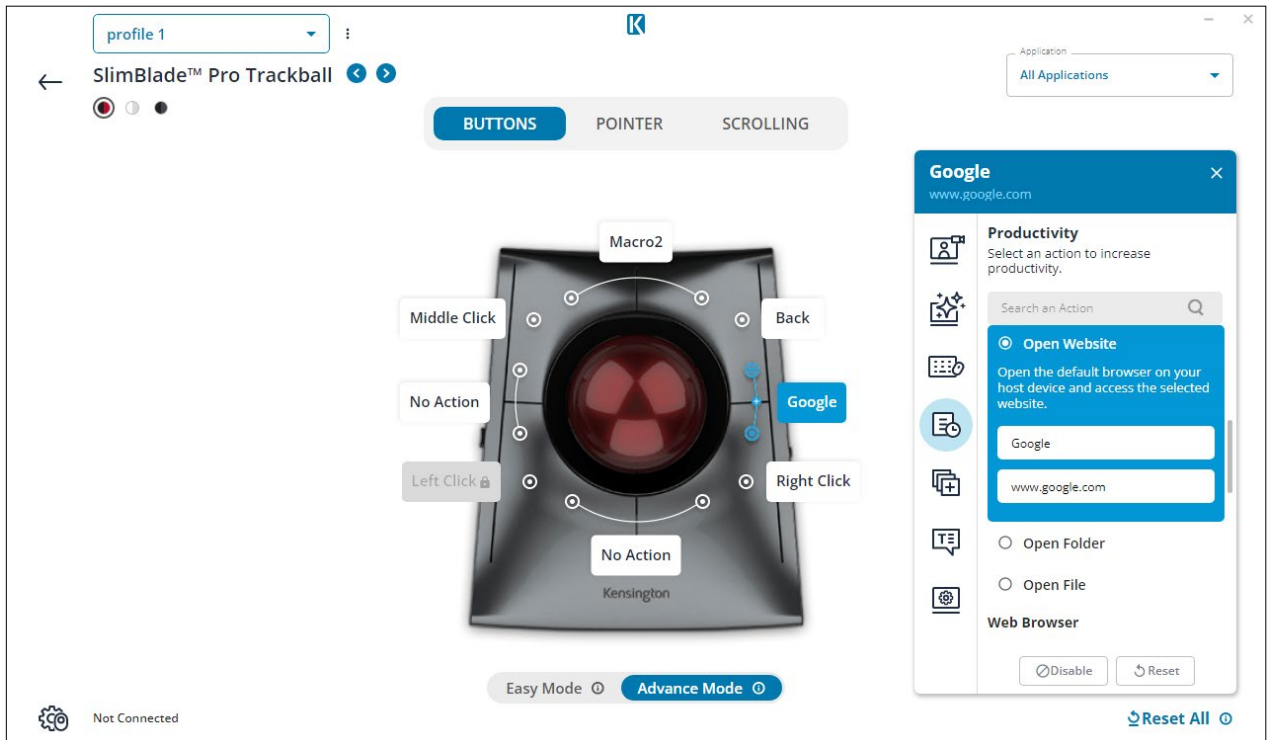
Launching

- Open Application
 - ◇ Click **“Choose application”** button to select an application from your device
 - ◇ Enter a desired label name for the shortcut



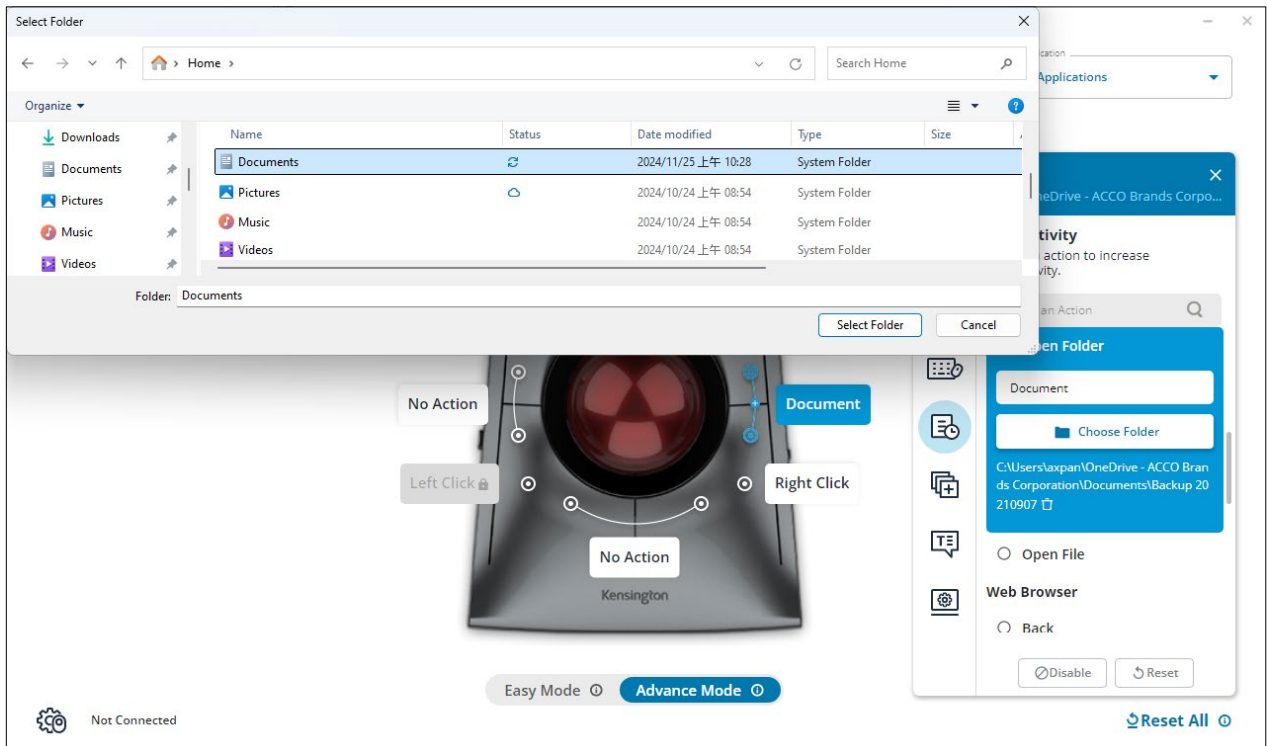
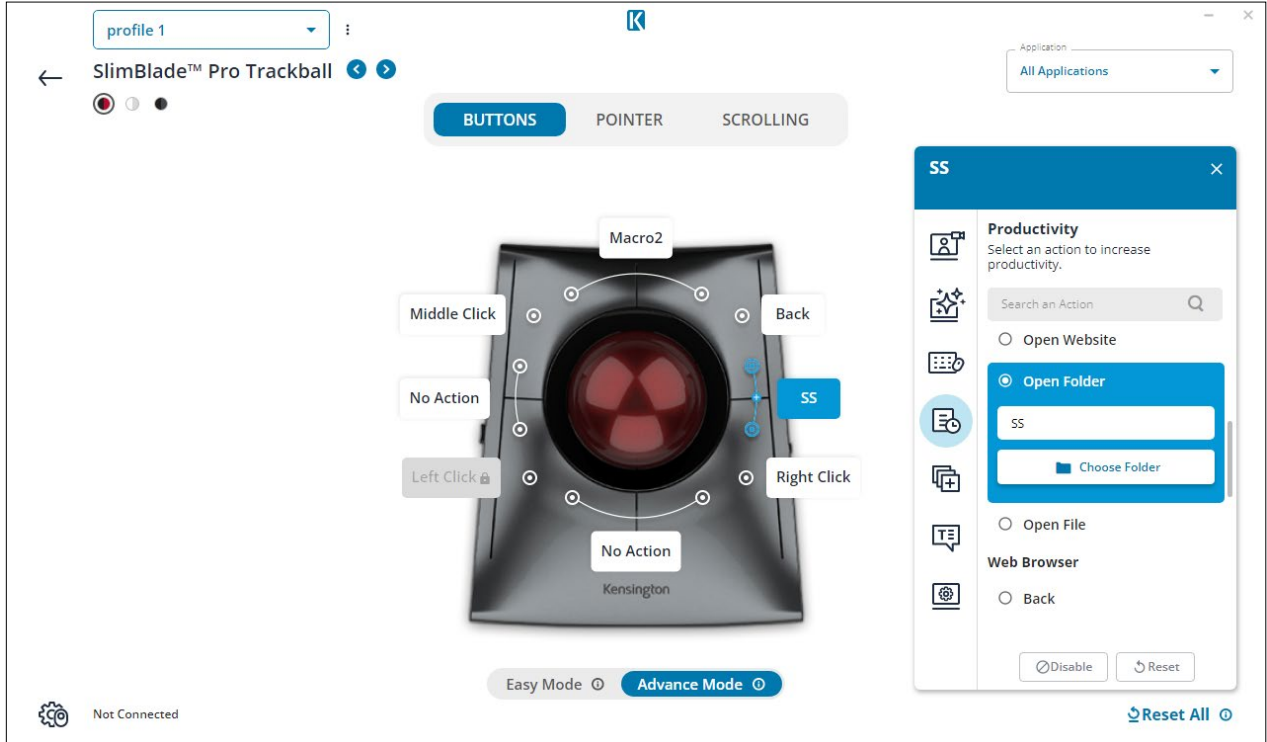


- Open the default browser on your host device and access the selected website.
 - ◇ Enter the URL
 - ◇ Enter a desired label name for the shortcut



Kensington Konnect User Guide

- Open Folder
 - ◇ Click **“Choose folder”** button to choose a folder from your device
 - ◇ Enter a desired label name for the shortcut



Web Browser

- Back
- Forward
- Stop
- Refresh

Desktop

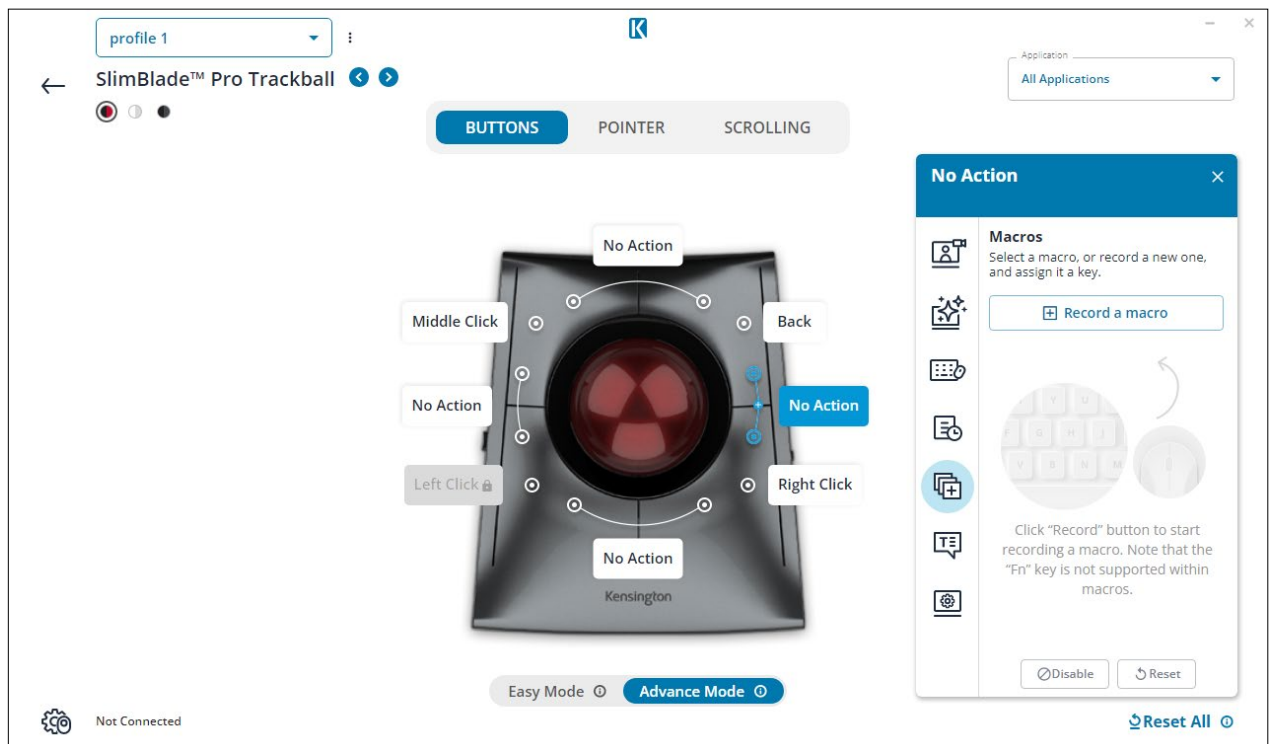
- Maximize Window
- Minimize Window
- Close Window
- Show Next Window
- Minimize All
- Show Desktop

Windows Snapping

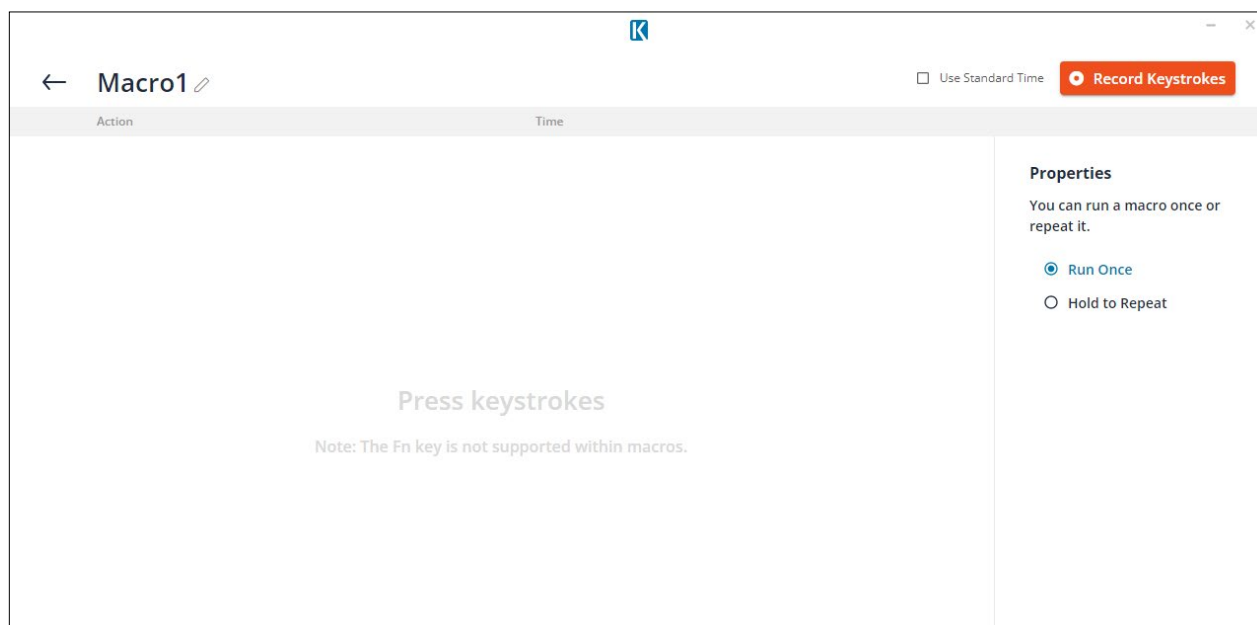
- Snapping Windows Right
- Snapping Windows Left

Macros

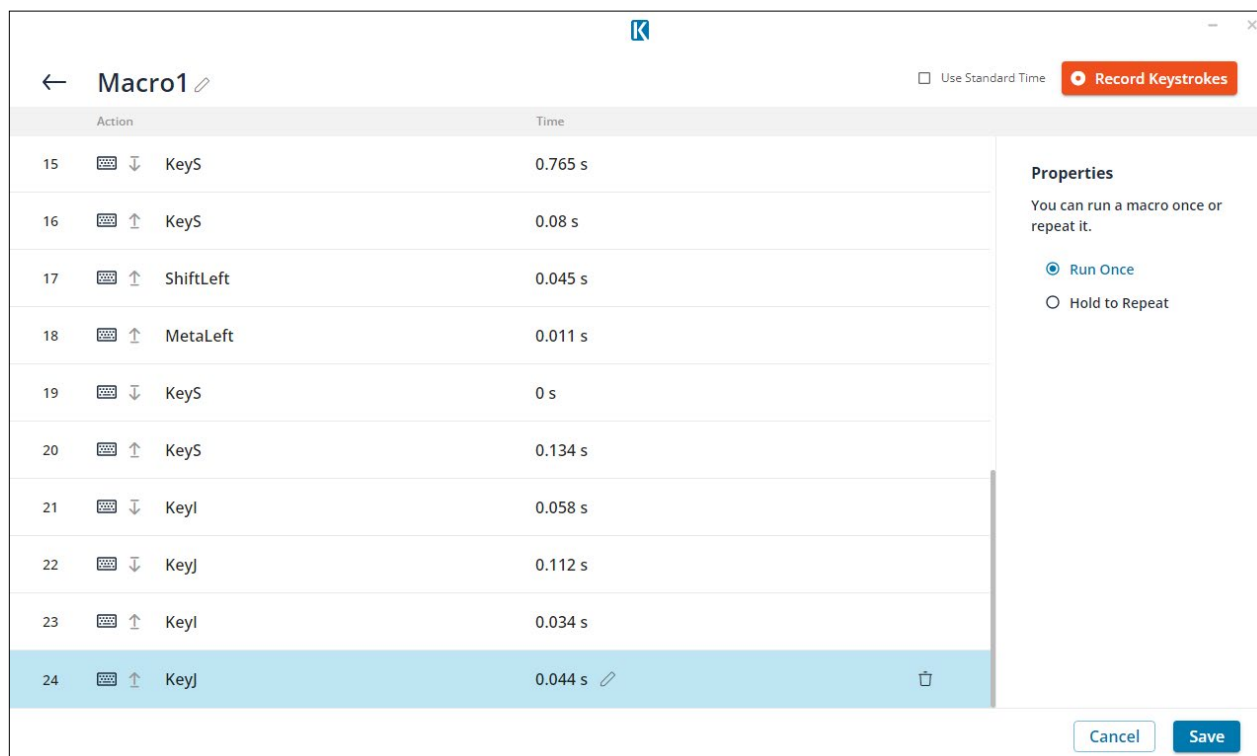
- Press a target button on your device
- Click the **“Record a macro”** button to start recording a macro



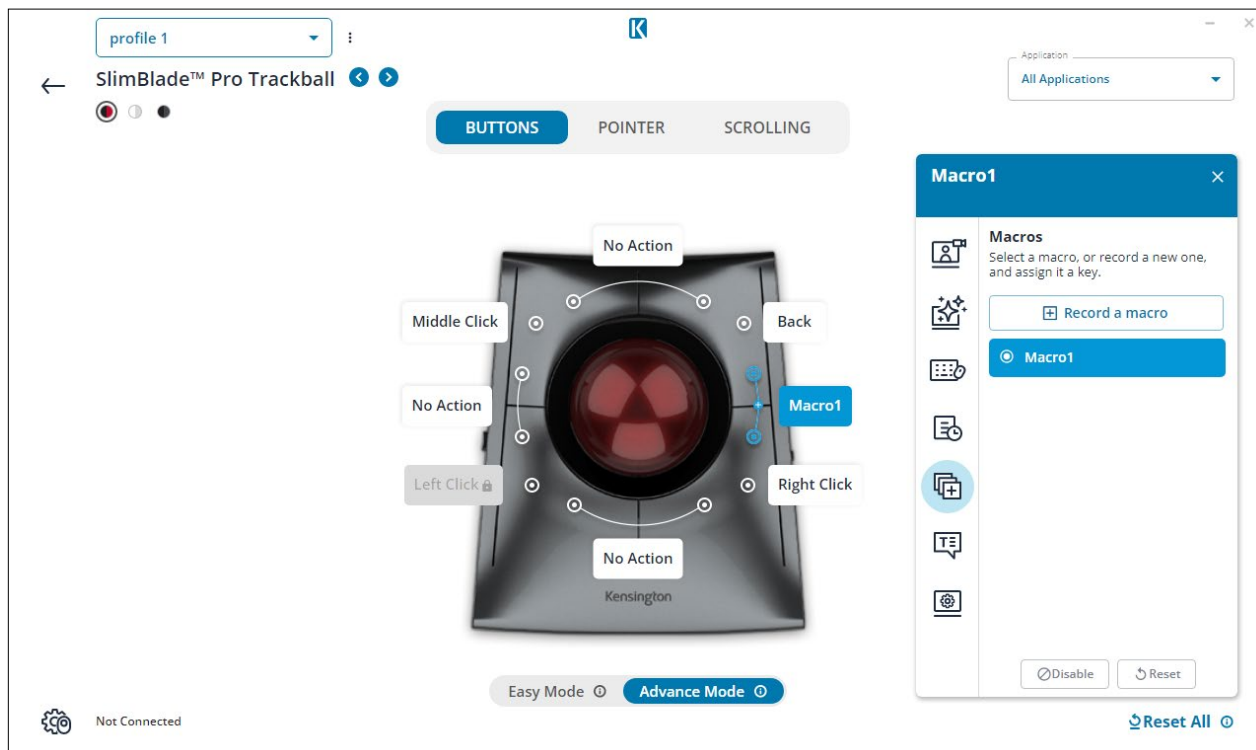
- Press **“Start Recording”** button
- Enter the desired keystrokes to create your macro.



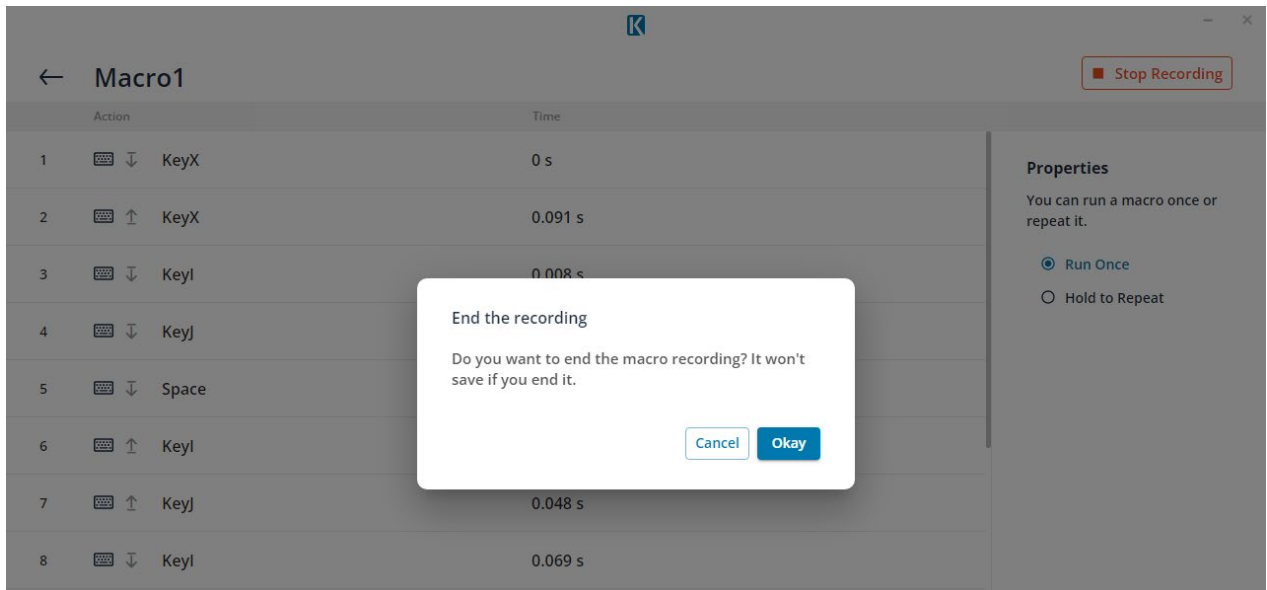
- Click **“Stop Recording”** when you have finished
- Click **“SAVE”** to record your macro



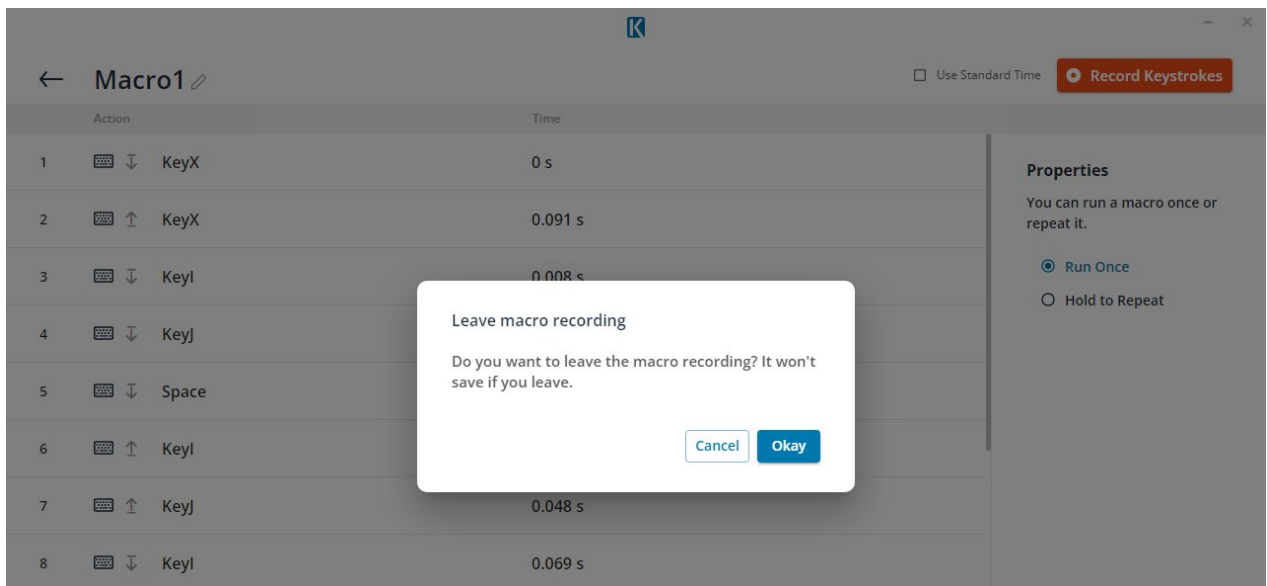
- To set the same time gap, click **“use standard time”**
- Choose **“Run Once”** or **“Hold to Repeat”** from right **“Properties”** menu
- By clicking **“Reset”**, the keystrokes will be cleared
- Click **“SAVE”** and Macro1 will be created and assigned to the selected button.



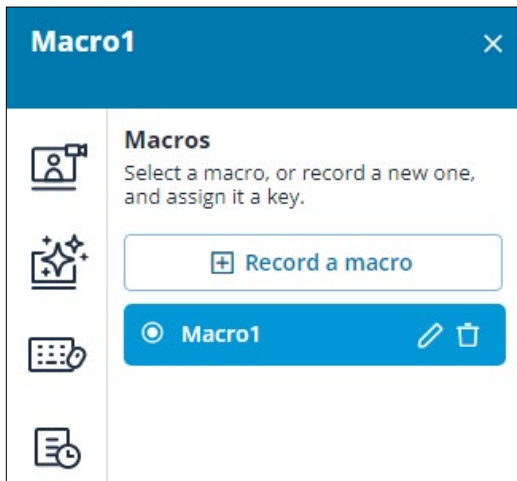
- If leaving this page, without clicking **“stop recording”**
 - ◇ A notification will appear to confirm if you want to cancel the macro or not
 - ◇ **Okay** -> Leave the Macro recording without saving
 - ◇ **Cancel** -> Stay in the Macro recording and continue to edit your desired Macro



- If you leave this page without clicking **“SAVE”**
- ◇ A notification will appear to confirm if you want to cancel the macro or not
 - ◇ **Okay** -> Leave the Macro recording without saving
 - ◇ **Cancel** -> Stay in the Macro recording and continue to edit your desired Macro



- Delete a recorded macro by clicking the trash bin icon.



- Rename the Macro by clicking the pencil icon

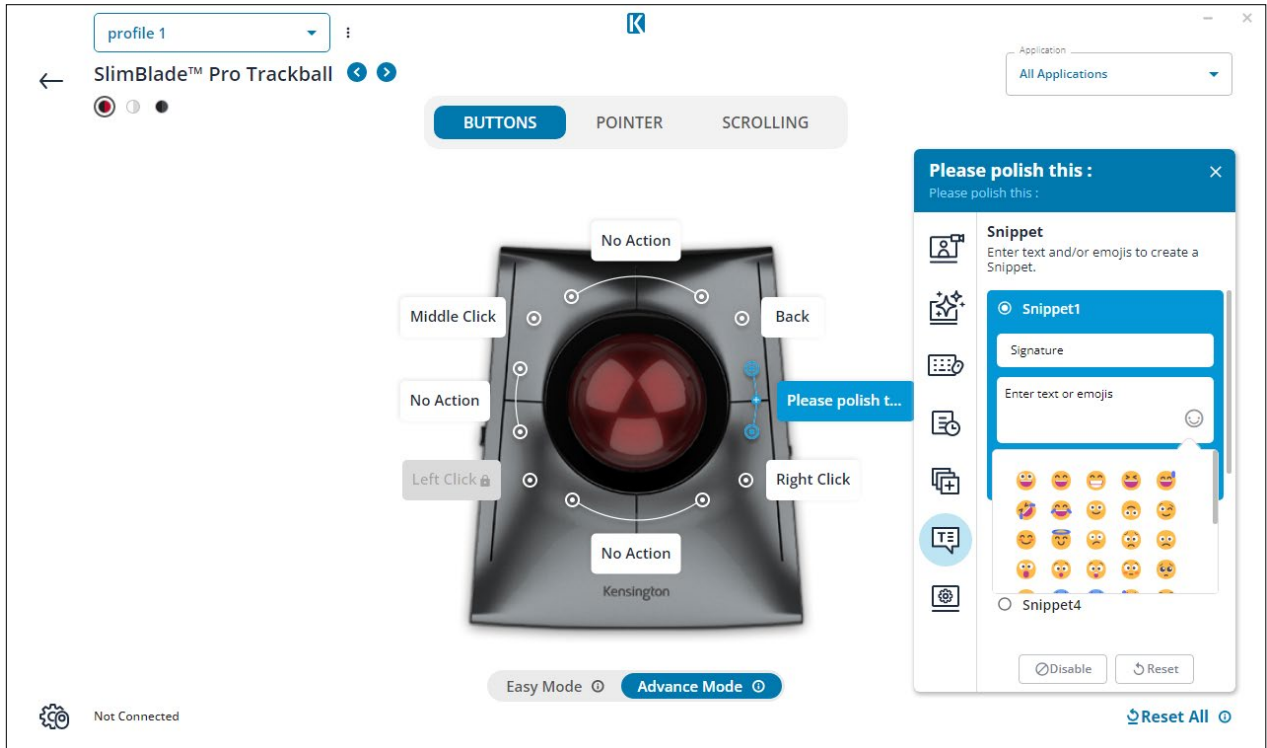
The screenshot shows a window titled "Macro2" with a back arrow on the left and a Kensington logo (K) in the top right. Below the title is a table with two columns: "Action" and "Time". The table contains ten rows of macro actions.

	Action	Time
3	↓ Space	0.068 s
4	↓ KeyL	0.005 s
5	↑ Space	0.097 s
6	↓ KeyI	0.013 s
7	↑ KeyL	0.013 s
8	↓ KeyJ	0.122 s
9	↑ KeyI	0.011 s
10	↓ Digit4	0.069 s

Snippet

Enables the setup of custom text and/or emojis for quick and convenient access.

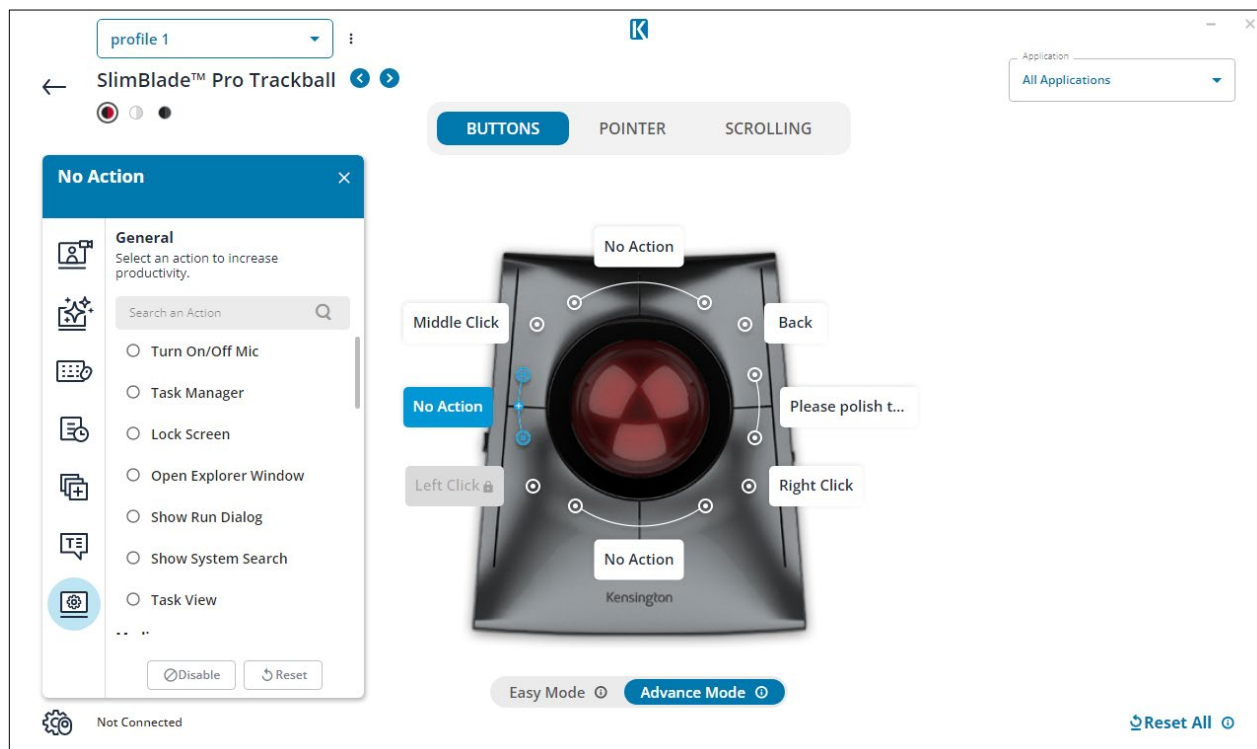
- Press the button on your input device that you'd like to assign a snippet function to.
- Enter the Snippet label along with text and/or emojis in the menu column.



General

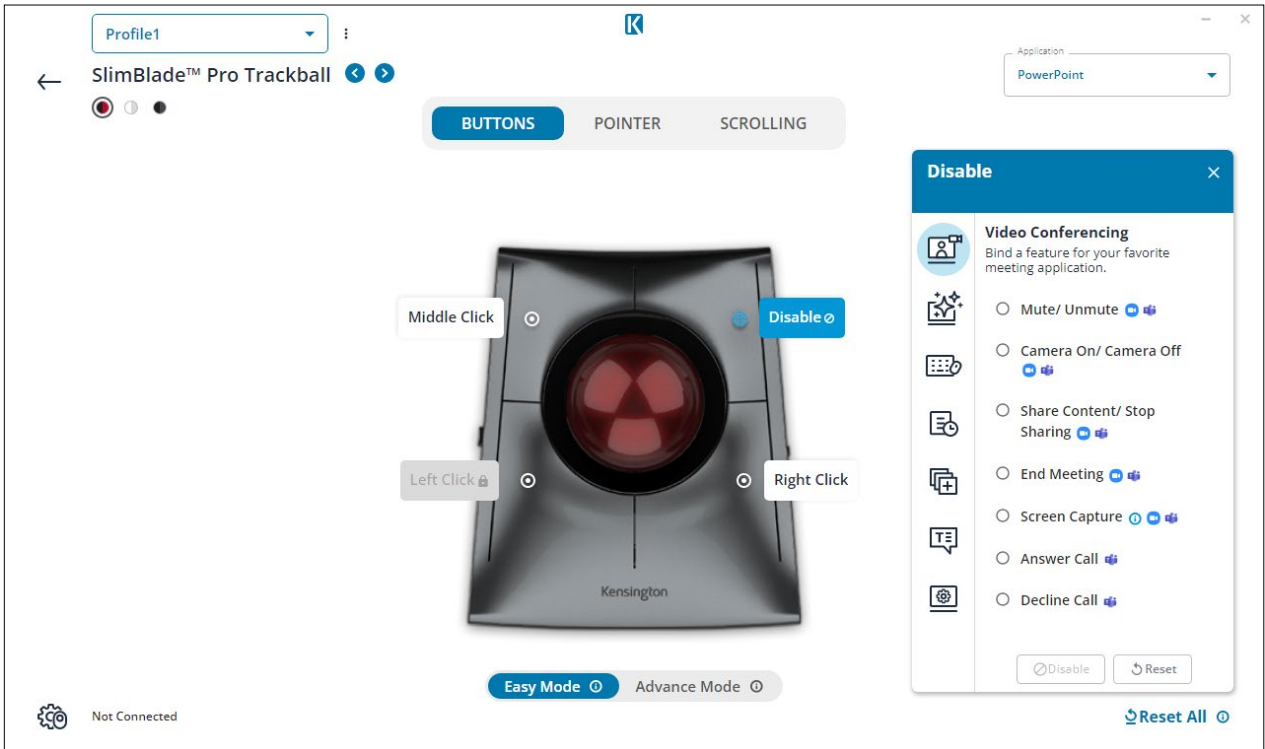
Provides more actions for settings

- Type in keywords to search for a function
- Press the button on your input device that you'd like to assign a function.
- Choose the function you want to assign from the menu.



Delete/Reset a button

- To disable a button, select the desired button and click the **“Disable”** tab.
- To reset a button to its default settings, select the desired button and click the **“Reset”** tab.

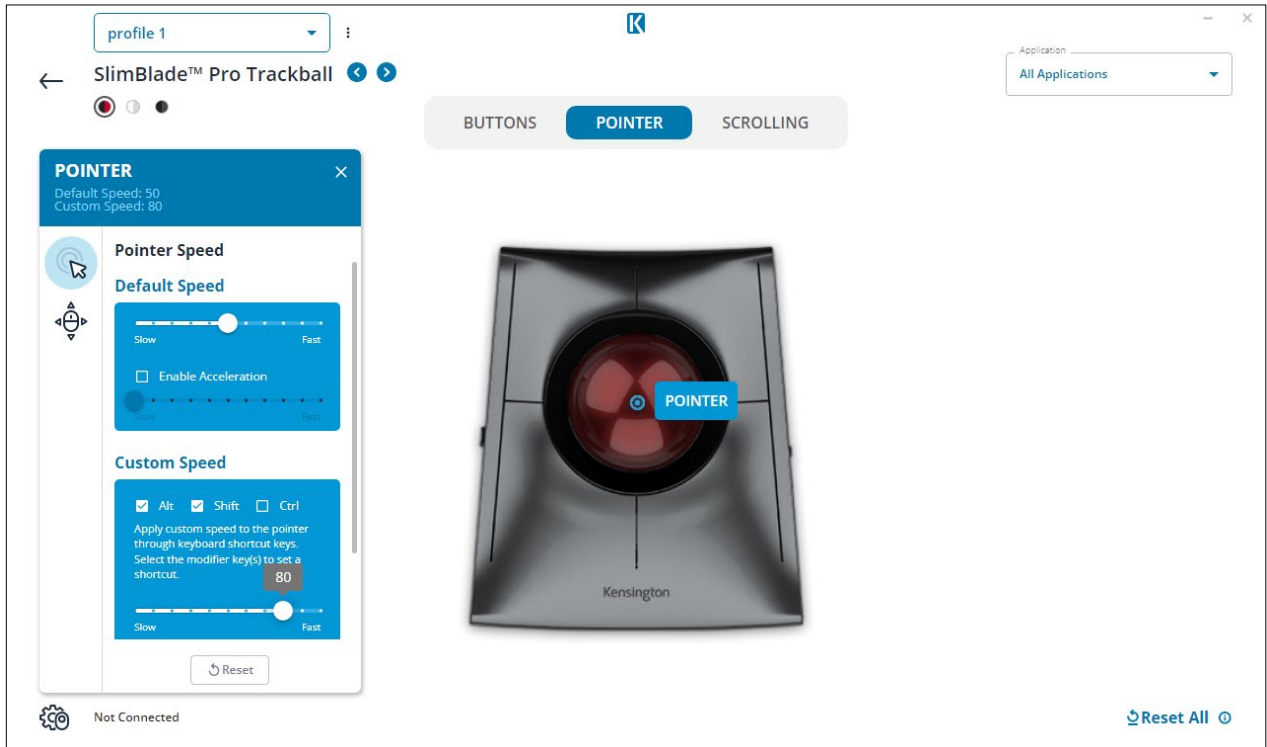


Pointer

By adjusting the Pointer settings, users can configure the default cursor movement speed, enable acceleration, apply a custom speed or restrict cursor movement to a single plane, either horizontally or vertically.

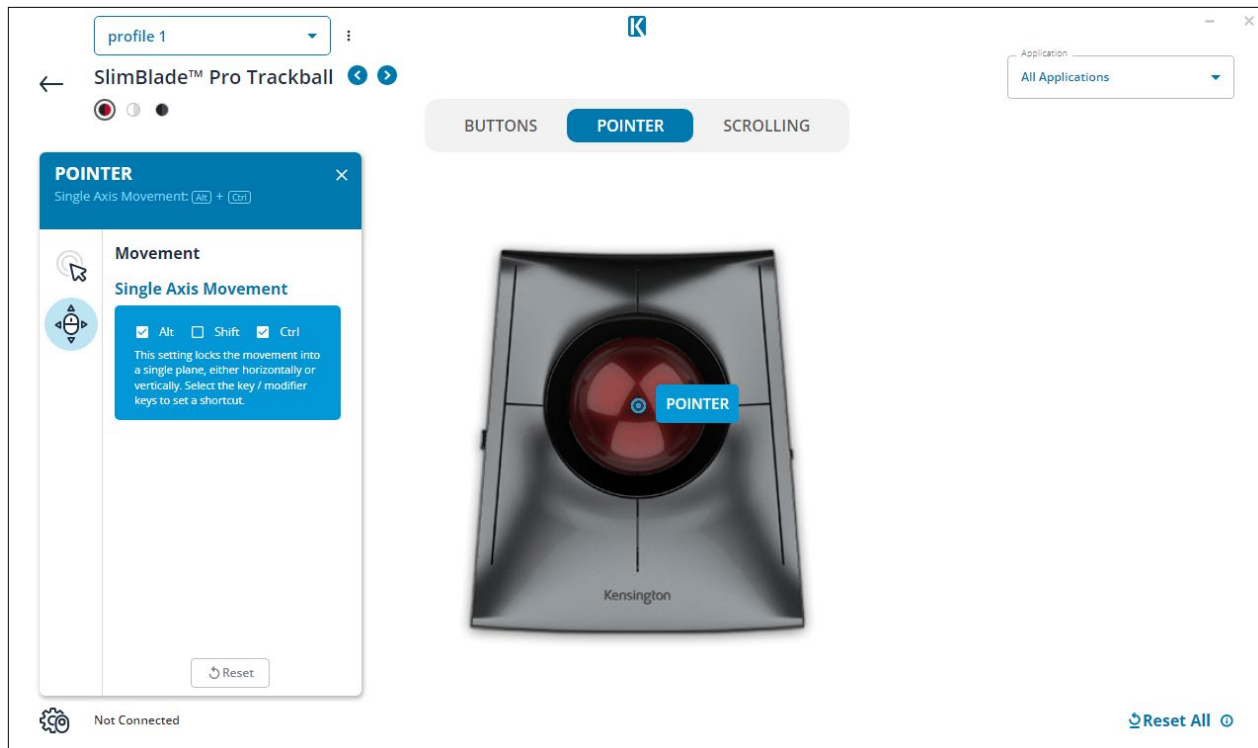
Pointer: Speed

- By adjusting the Pointer settings, users can configure the default cursor movement speed, enable acceleration, or apply a custom speed by pressing one or a combination of keyboard modifier keys.



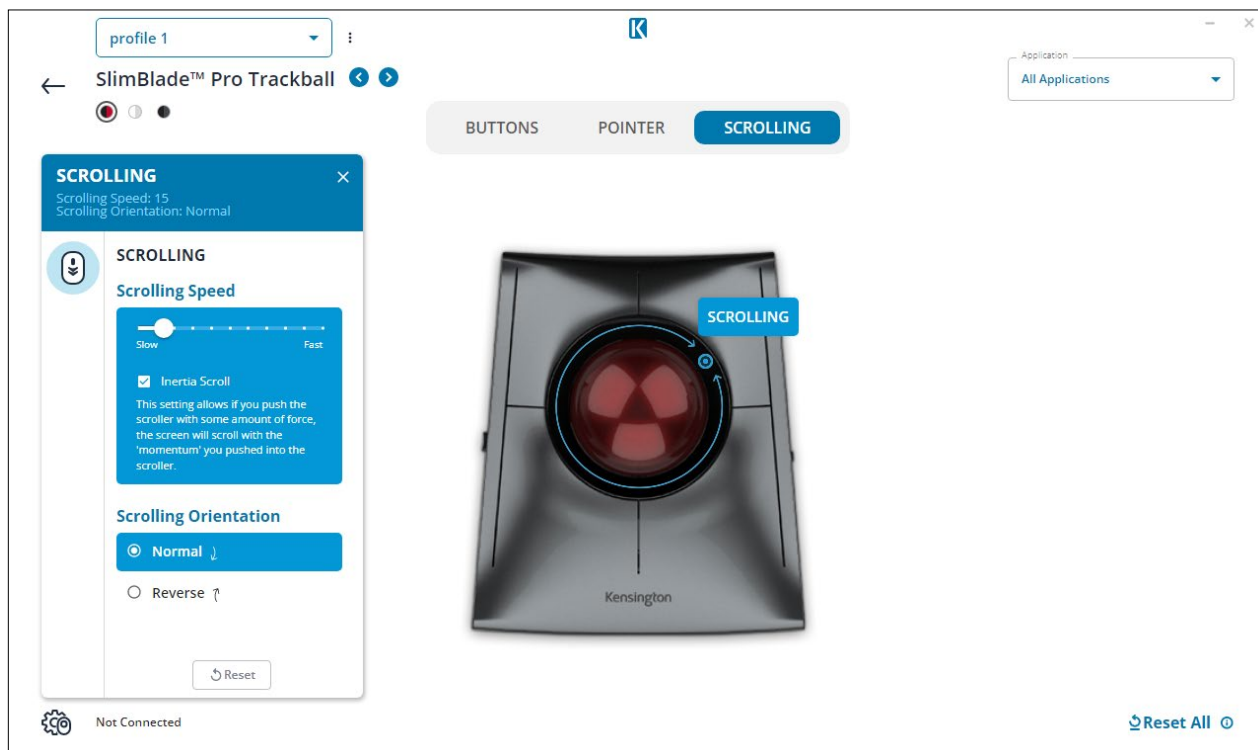
Pointer: Movement

- Users can also restrict cursor movement to a single plane, either horizontally or vertically, by assigning a shortcut using one or a combination of modifier keys.



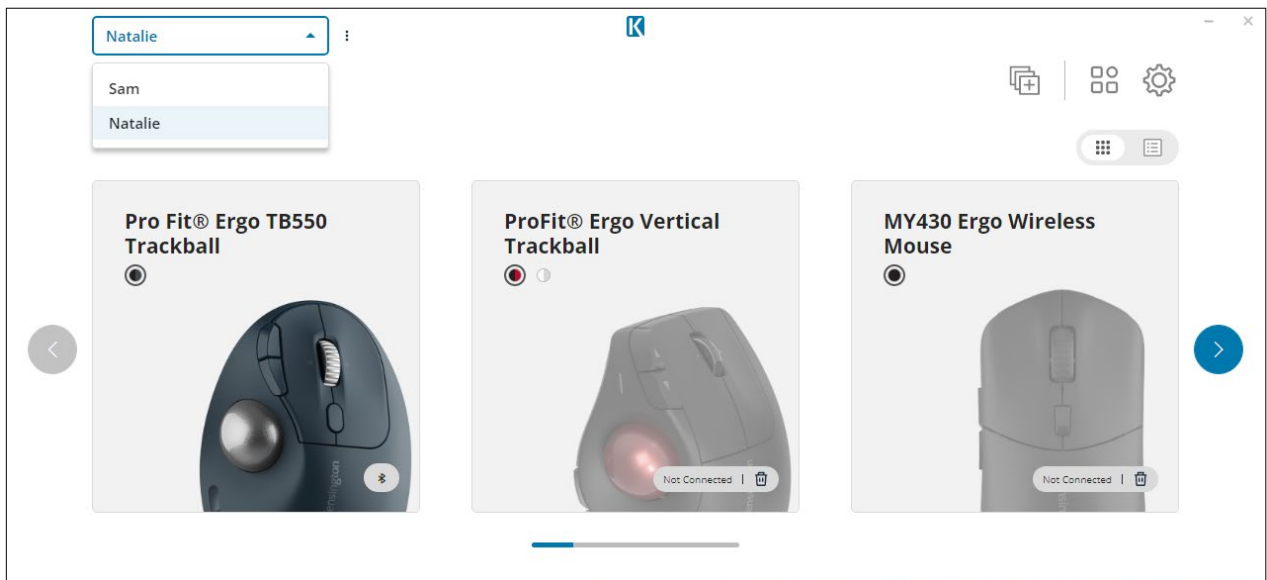
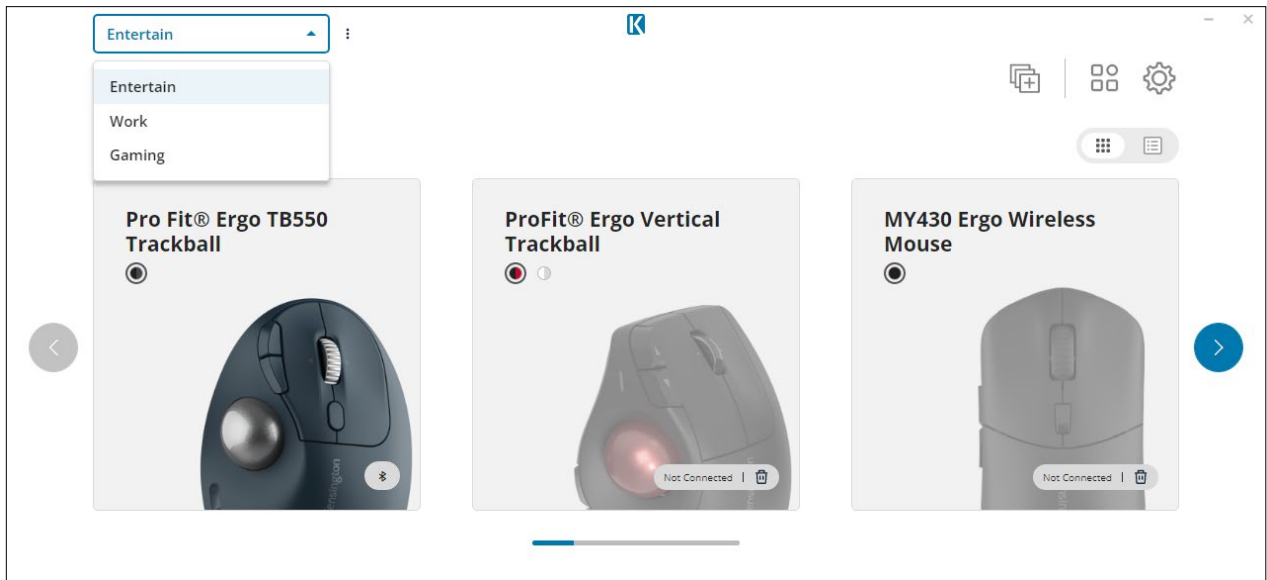
Scrolling

By adjusting the scrolling settings users can change scrolling speed, enable inertia scrolling, or alter scrolling orientation.

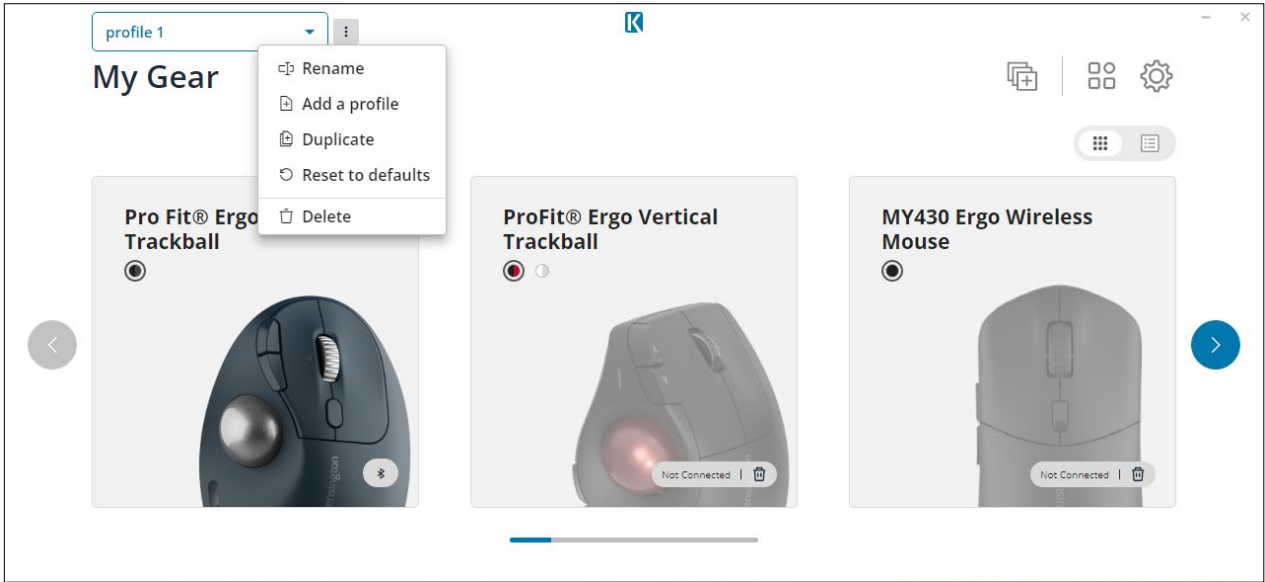


Profiles

- Users can customize settings for various devices and save them as specific profiles on all devices supported by Kensington Konnect. Multiple profiles can be created to accommodate different scenarios or multiple users sharing the same host device.
- Users can create individual profiles for each device and choose the desired profile to apply from either the Home Page or the Device Page.



- Clicking the three-dot menu “...”, you can **Rename**, **Add a profile**, **Duplicate**, or have everything **Reset to defaults**.



- **Rename the profile**

Profile ⋮
Enter up to 17 characters

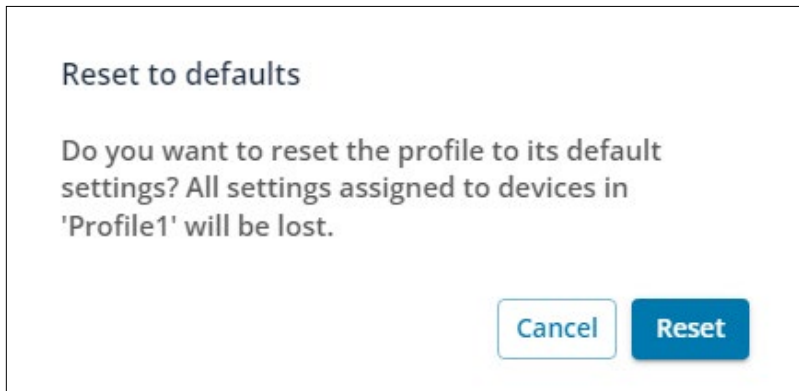
- **Add a profile**

Profile ⋮
Enter up to 17 characters

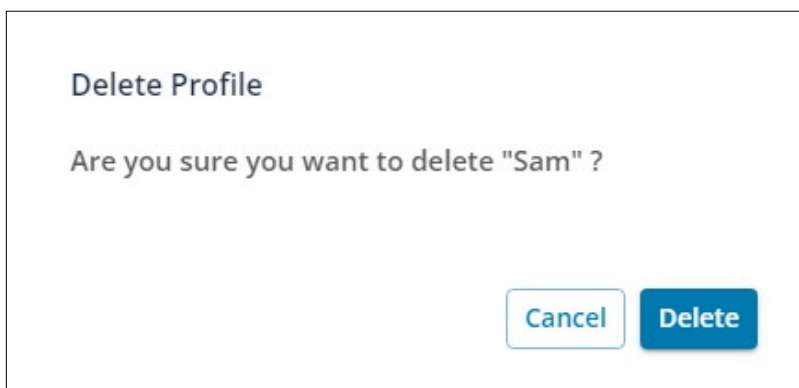
- **Duplicate** if you want to simply make a copy of a current profile

Profile ⋮
Enter up to 17 characters

- **Reset to default;** a notice will be appear to confirm your action
 - ◇ Cancel: Cancels the action
 - ◇ Reset the profile to its default settings. All settings assigned to devices with that specific Profile will be lost.
- A notification will appear to confirm the action was completed



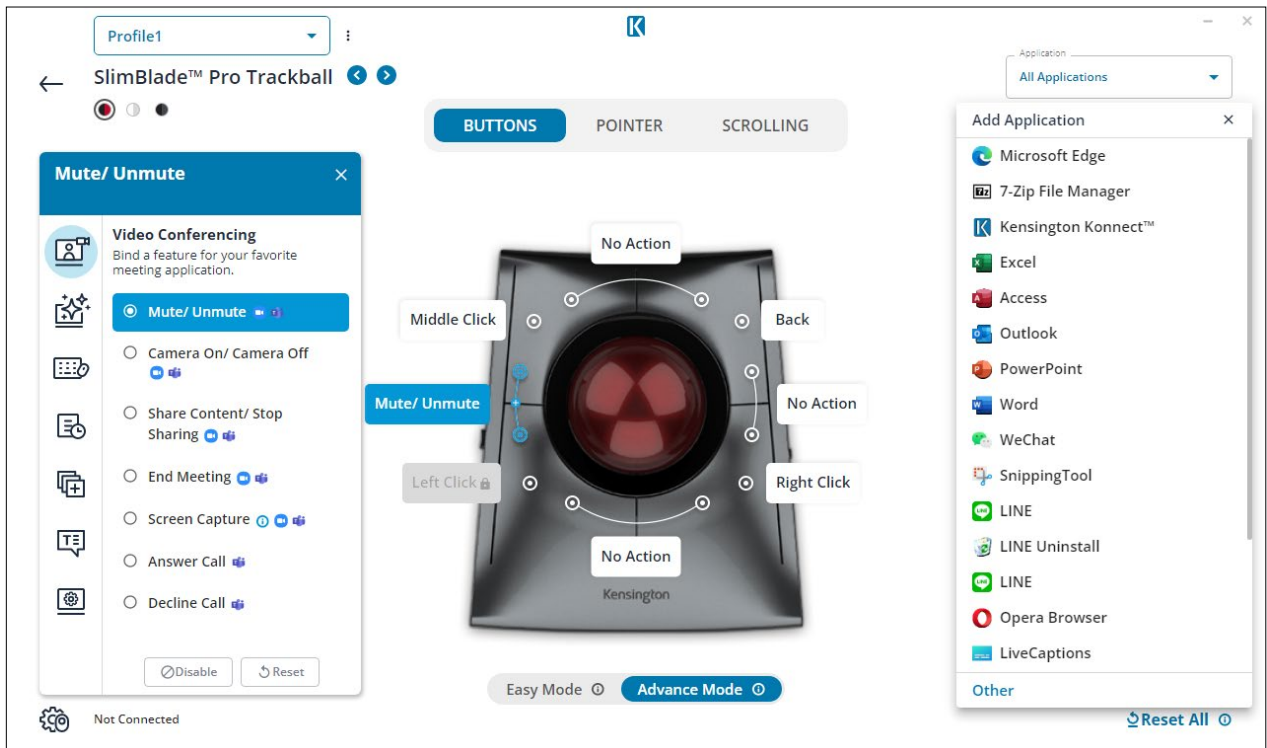
- **Delete;** a notice will be appear to confirm your action
 - ◇ Cancel: Cancels the action
 - ◇ Delete: Deletes the selected profile
- A notification will appear to confirm the action was completed



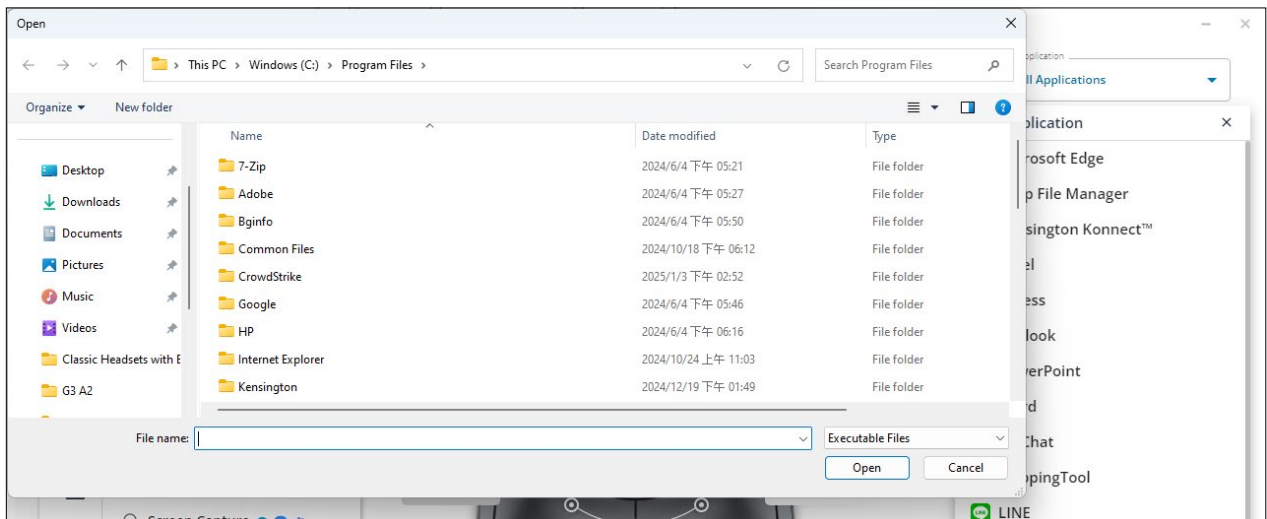
Sam has been deleted.

Applications

- Settings are applied to All Applications by default. Users can assign specific settings to an application by clicking “+ Add Application” and selecting the desired application to apply the settings.
 - ◇ Settings will be applied to All Applications by default.
 - ◇ Users can assign a setting to a specific application by clicking “+ Add Application” and selecting the specific application for the settings to be applied.

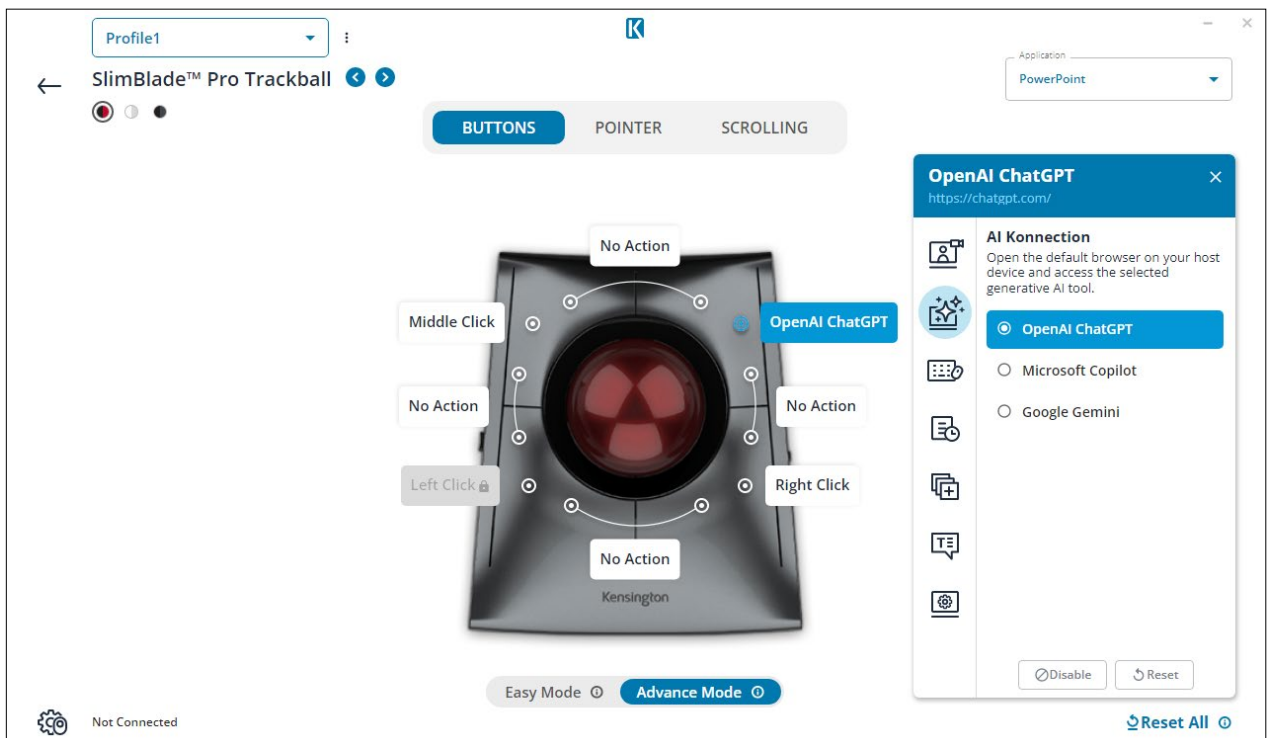
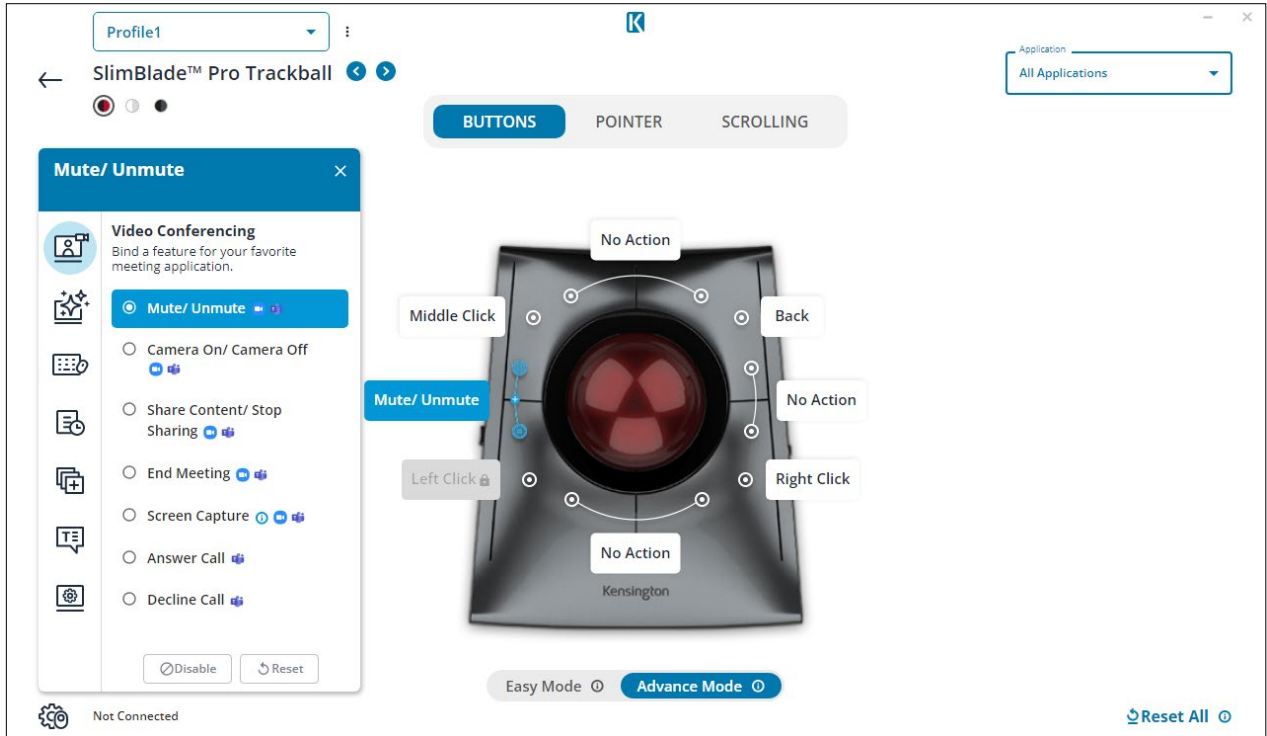


- If you are unable to find an application from the list, click “other” to expand the search on your device



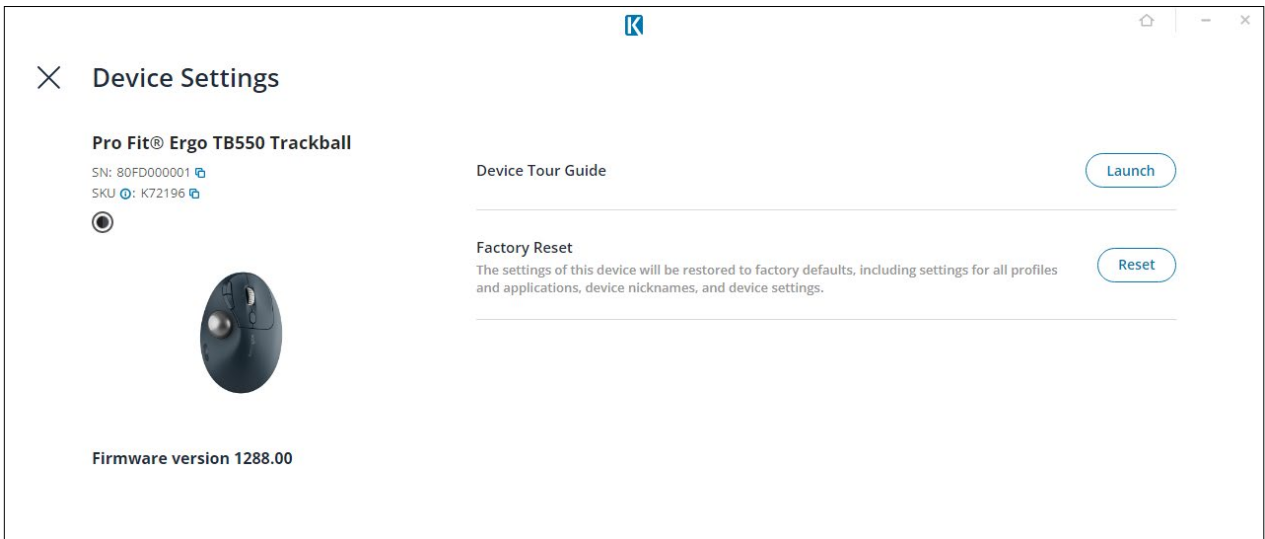
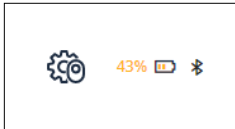
Example 1:

- By default, the upper right key is set to “Back” under All Applications.
- For PowerPoint, the upper right key is configured to “OpenAI ChatGPT,” which launches the default browser on the host device and accesses the web version of ChatGPT.




Device settings

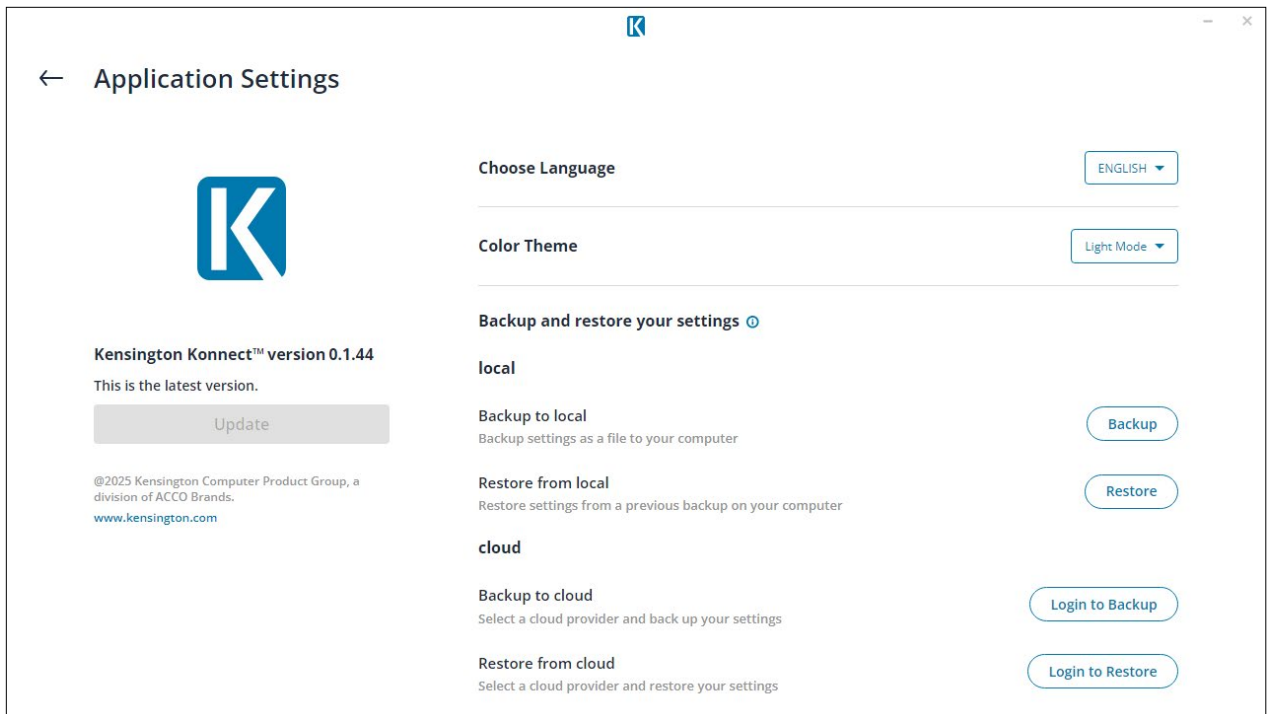
By selecting the gear icon in the bottom-left corner of the device page, users can access the “Device Settings” page.

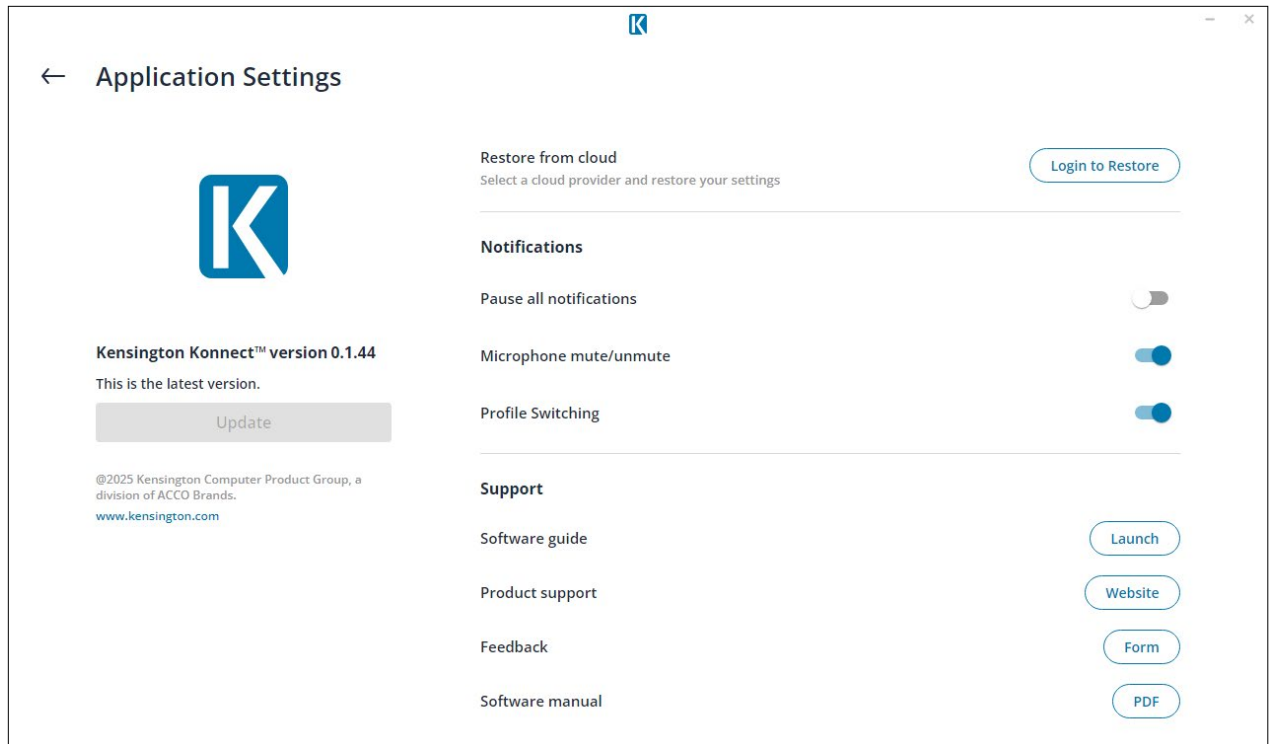


- Users can view the Model Name, Model Number, and the latest Firmware Version for a device on the Device Settings page.
- If a new firmware update is available, users can access, download, and update to the latest version through the embedded link on this page.
- Additionally, users can launch the Device Tour Guide or Reset the settings configured through the Kensington Konnect software back to the device’s default values from this page.

Global Setting

- Click the gear icon “





Software Update

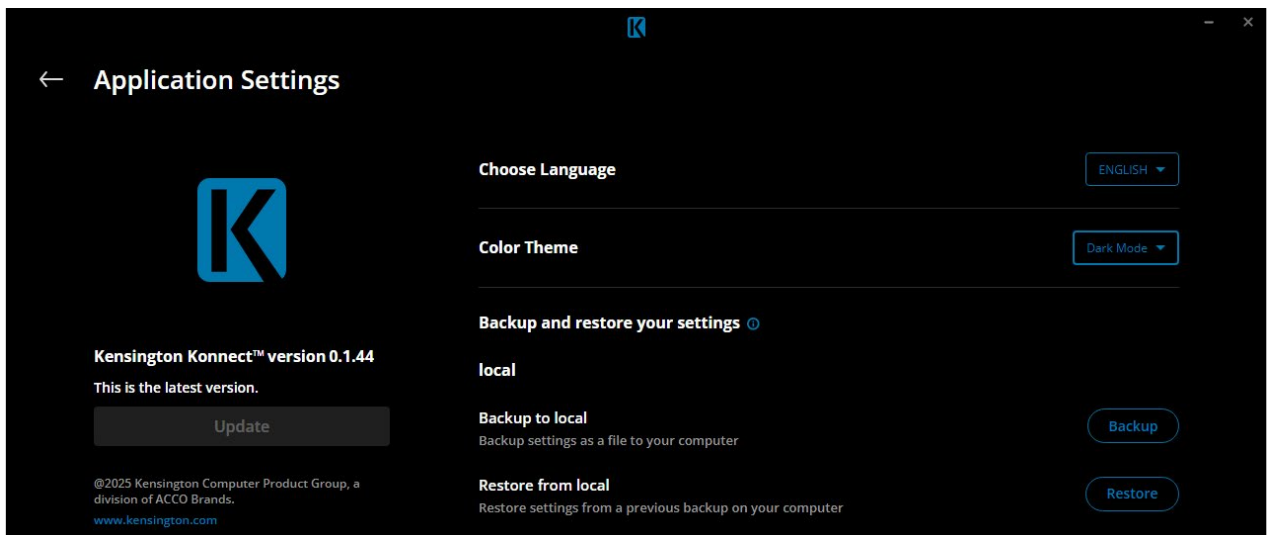
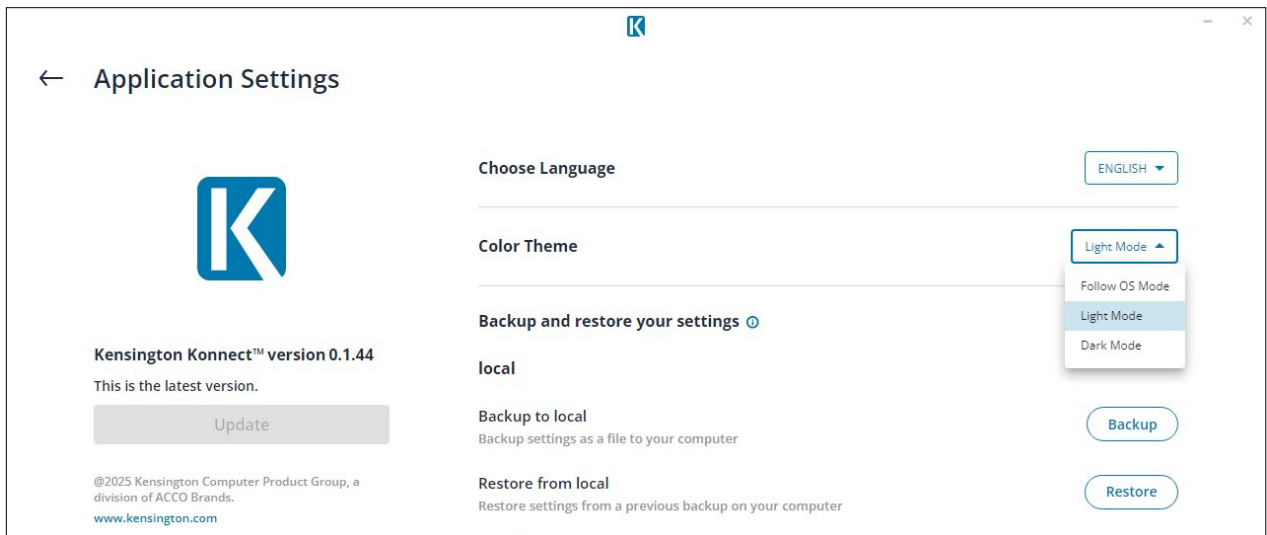
- Indicates if the version is up to date. If an update is available, click the “update” button to install the latest version

Choose Language

- The default language will mirror that of the language used on the computer’s operating system, however, you can manually select your preferred Language from the drop-down list

Color Theme

- Choose between Follow OS Mode, Light Mode or Dark Mode.



Backup your Settings

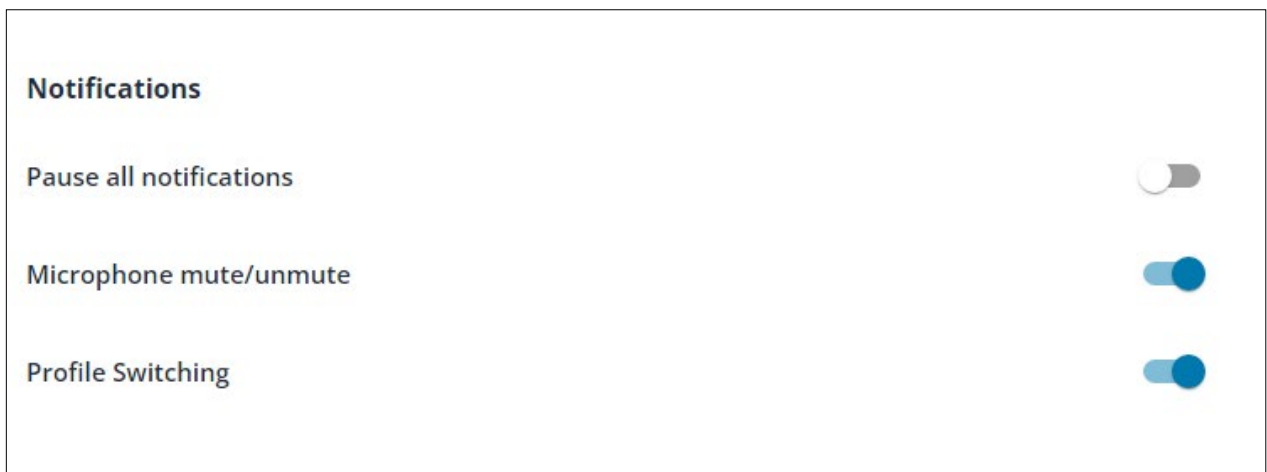
- To Local: Allows the ability to save your current Kensington Konnect settings to a local file on your computer or connected device
- Follow the prompts within the software to backup the settings if/when needed
- To Cloud: Allows the ability to save a backup of the current Kensington Konnect settings to a cloud-based location (Google Drive and OneDrive are supported)

Restore your Settings

- From Local: Allows the ability to restore the Kensington Konnect settings from a local backup file on the computer or connected device
- Follow the prompts within the software to restore the settings if/when needed
- From Cloud: Allows the ability to restore the Kensington Konnect settings from a cloud-based location (Google Drive and OneDrive are supported)

Notifications

- Toggle the below features to adjust system notifications
- Pause all notifications.
 - ◇ Microphone mute/unmute
 - ◇ Profile switching



Support

- Software guide: Launches the quick start guide for Konnect
- Product support: Provides quick links to support materials including contact paths, FAQs, and video guides
- Software Manual: Launches the Konnect manual

Feedback

- Launch the Feedback Form to allow users to submit their feedback about the software.

Need More Help?

- Click **“Debug mode”** button and then click **“Export log file”** to download the log file and send to Kensington Tech Support

